



**PAVERS**

2026 OUTDOOR PORCELAIN PAVER COLLECTION



## Your One-Stop Shop for Premium Outdoor Solutions About NT Pavers

At **NT Pavers**, we're passionate about elevating outdoor spaces through innovation, quality, and design. As a leading **supplier of porcelain pavers and pedestal systems**, we provide comprehensive solutions that combine style, durability, and functionality — making us your one-stop destination for all outdoor surface needs.

### Built to Withstand Any Environment

Our **porcelain pavers** are engineered to perform beautifully in any climate or condition.

- **Weather-Resistant:** Designed to endure temperature extremes, UV rays, and frost without fading or warping.

- **Non-Porous:** They don't absorb water, which means no stains, mold, or mildew — ensuring a clean and low-maintenance finish year after year.

### Safety, Comfort, and Performance

Safety meets sophistication with our advanced, **anti-slip surfaces** — ideal for patios, pools, and wellness areas. Our products are also **child- and pet-friendly**, offering peace of mind along with timeless design.

### Seamless Indoor-Outdoor Harmony

NT Pavers helps you achieve a **cohesive indoor-to-outdoor transition** with matching porcelain tiles, pavers, and pedestal systems. Whether your style is modern, classic, or contemporary, our specialized finishes and design options let you create a seamless, elegant flow throughout your space.

### Low Maintenance, Long-Lasting Quality

Built for longevity, our porcelain surfaces are **scratch, stain, and fade-resistant**. They retain their color and texture even in direct sunlight, delivering long-term value with minimal upkeep — perfect for both residential and commercial applications.

### Transforming Outdoor Living

From luxury patios to large-scale architectural landscapes, **NT Pavers combines** technical excellence with aesthetic beauty. With our premium materials, expert guidance, and complete pedestal systems, we make it easy to build stunning, durable spaces that stand the test of time.



NT TRADING INC.  
201-507-9090  
WWW.NTPAVERS.COM





## BENEFITS



**HIGH RESISTANCE TO BREAKING LOADS AND STRESS**



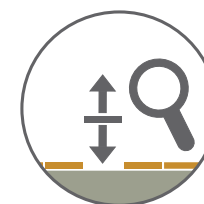
**HIGH NON-SLIP PERFORMANCE: R11 A+B+C**



**EASY TO CLEAN**



**HIGH RESISTANCE TO FROST AND FIRE**



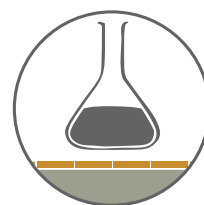
**EASY TO INSTALL, REMOVE AND REPOSITION \***



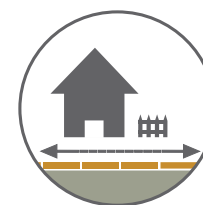
**RESISTANCE TO THE WEATHERING ELEMENTS AND THERMAL SHOCK**



**RESISTANCE TO SALT AND INALTERABILITY OVER TIME**



**RESISTANT TO ACIDS**

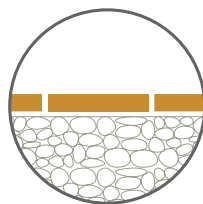


**PERFECT CONTINUITY BETWEEN INDOOR AND OUTDOOR AREAS**

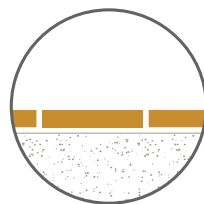


**REUSABLE**

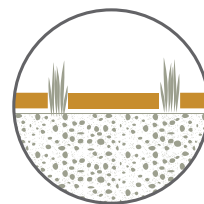
□ IT DOES NOT REQUIRE A SPECIALIZED TILE LAYER (IN CASE OF DRY INSTALLATION) NEITHER THE USE OF GLUES AND GROUTS (IN CASE OF DRY OR RAISED INSTALLATION)



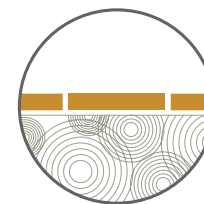
**DRY INSTALLATION ON GRAVEL**



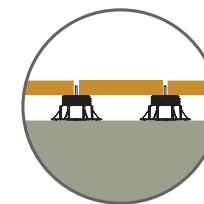
**DRY INSTALLATION ON SAND**



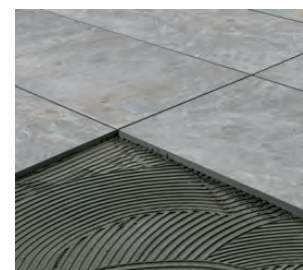
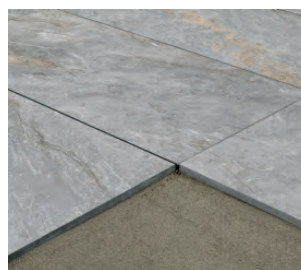
**DRY INSTALLATION ON GRASS**



**TRADITIONAL INSTALLATION ON SCREEDS**



**RAISED INSTALLATION ON SUPPORTS**



## INTENDED USES

PORCELAIN 2CM PAVER'S MAIN FEATURES MAKE IT THE IDEAL SOLUTION FOR ANY TYPE OF PUBLIC AND PRIVATE

OUTDOOR FLOORING. PORCELAIN 2CM PAVER REPRESENTS THE BEST SOLUTION FOR:

- WALKWAYS IN GARDENS OR ON BEACHES
- TERRACES AND BALCONIES

- PATIOS, COURTYARDS, SWIMMING POOL EDGES, AND WELLNESS CENTRES
- DRIVE-OVER PATHWAYS



## About NT Porcelain Pavers for Facades: Redefining Architectural Elegance Where Performance Meets Perfection

At **NT Pavers**, we believe porcelain isn't just for the ground—it's a statement for every surface. Our **premium porcelain pavers** now extend beyond patios and pathways to grace the **facades of architectural masterpieces**. Crafted with cutting-edge Italian technology, these pavers transform exterior walls into timeless works of art that perform as beautifully as they look.

Featuring **Philly White Porcelain Pavers**, the project demonstrates the unmatched versatility of our products — seamlessly transitioning from outdoor walkways to the vertical beauty of the home's facade. The result? A **clean, modern, and luminous exterior** that elevates curb appeal and exudes contemporary sophistication.

### Built for Beauty. Engineered for Life.

- 1. All-Weather Resistant:** From freezing winters to blazing summers, porcelain stays true — no fading, no cracking, no warping.
- 2. Non-Porous & Low Maintenance:** Dirt, water, and stains simply don't stick. Your facade remains immaculate with minimal upkeep.
- 3. UV & Frost Proof:** Perfect for any climate, porcelain maintains its vibrant color and integrity even in extreme conditions.
- 4. Architectural Precision:** Each tile is engineered for clean alignment, sharp edges, and elegant continuity across large wall surfaces.
- 5. Lightweight Cladding System:** Compatible with modern facade mounting systems for easy installation and long-lasting performance.

### The Future of Facade Design

Porcelain pavers have evolved — and so has architectural design. By bringing this **innovative cladding solution** to exterior walls, NT Pavers empowers architects, builders, and homeowners to think beyond traditional materials. Whether it's a **luxury estate**, a **boutique commercial project**, or a **modern urban residence**, our porcelain cladding turns buildings into enduring expressions of style and strength.







## NT Pavers Your One-Stop Shop for Premium Outdoor Solutions

At **NT Pavers**, we're passionate about elevating outdoor spaces through innovation, quality, and design. As a leading **supplier of porcelain pavers and pedestal systems**, we provide comprehensive solutions that combine style, durability, and functionality — making us your one-stop destination for all outdoor surface needs.

### Built to Withstand Any Environment

Our **porcelain pavers** are engineered to perform beautifully in any climate or condition.

**1. Weather-Resistant:** Designed to endure temperature extremes, UV rays, and frost without fading or warping.

**2. Non-Porous:** They don't absorb water, which means no stains, mold, or mildew — ensuring a clean and low-maintenance finish year after year.

Safety, Comfort, and Performance Safety meets sophistication with our advanced, **anti-slip surfaces** ideal for patios, pools, and wellness areas. Our products are also **child- and pet-friendly**, offering peace of mind along with timeless design.

## Seamless Indoor-Outdoor Harmony

NT Pavers helps you achieve a **cohesive indoor-to-outdoor transition** with matching porcelain tiles, pavers, and pedestal systems. Whether your style is modern, classic, or contemporary, our **specialized finishes and design options** let you create a seamless, elegant flow throughout your space.

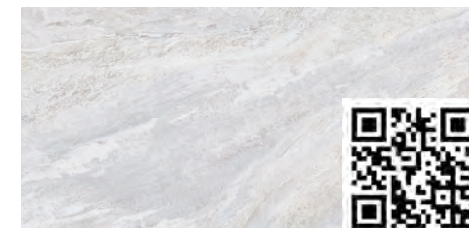
Low Maintenance, Long-Lasting Quality Built for longevity, our porcelain surfaces are **scratch, stain, and fade-resistant**. They retain their color and texture even in direct sunlight, delivering long-term value with minimal upkeep — perfect for both residential and commercial applications. Transforming Outdoor Living From luxury patios to large-scale architectural landscapes, **NT Pavers** combines technical excellence with aesthetic beauty. With our premium materials, expert guidance, and complete pedestal systems, we make it easy to build stunning, durable spaces that stand the test of time.



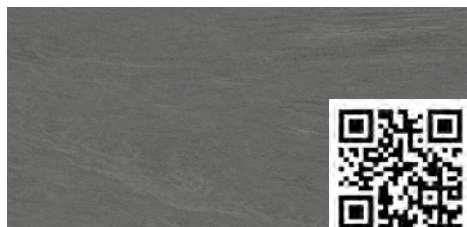
# COLORS

| 20"x40" |

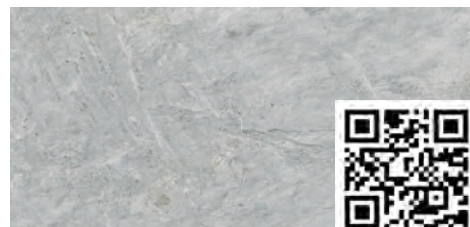
WHITE



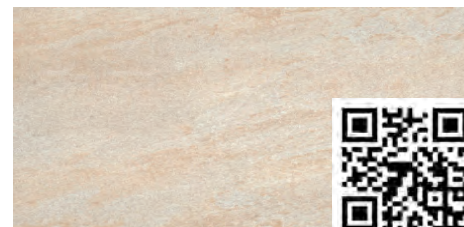
SMOKEY



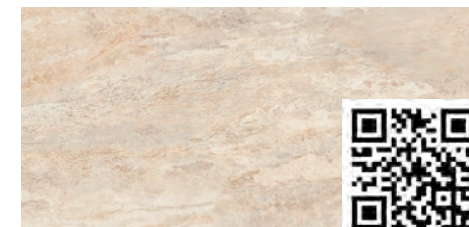
MOON



DESERT



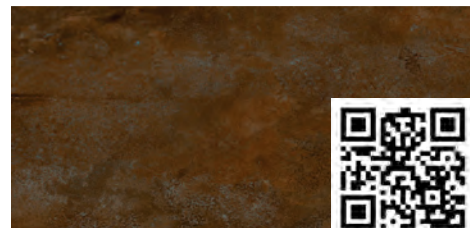
DUST



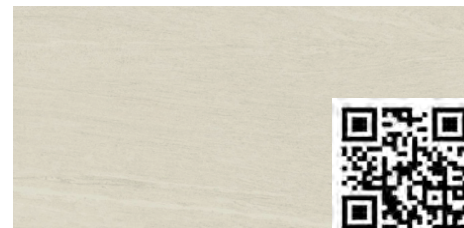
DARK



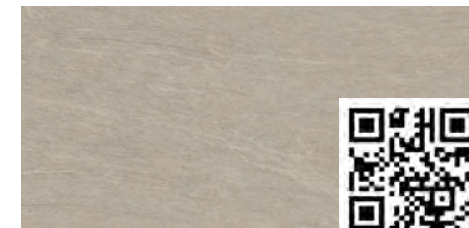
CORTEN



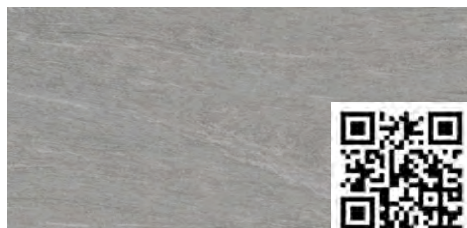
ALPINE



SAND



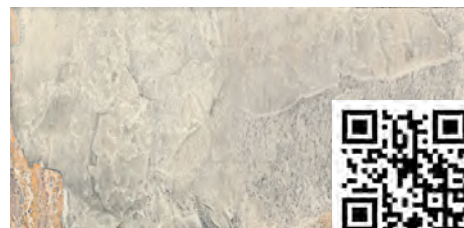
SILVER



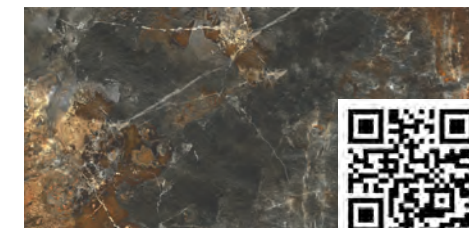
MARS



MINERAL



FOSSIL





WHITE



SCAN  
TO WATCH



**DARK**



SCAN  
TO WATCH



# MINERAL



SCAN  
TO WATCH



# LARGE MODULAR PATTERN

| 3 SIZES | *These sizes can be purchased individually, allowing for both patterned and single-size selections.*

## TIVOLI CREAM



36"x36"



18"x36"



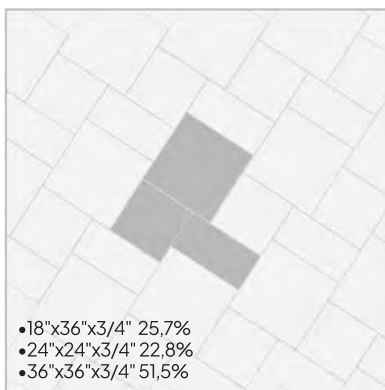
24"x24"



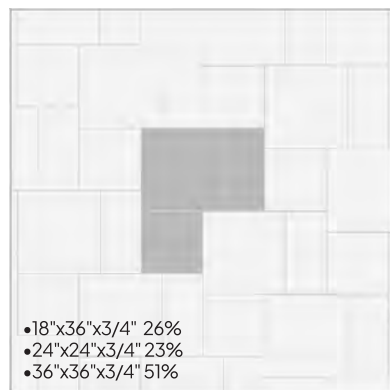
Access  
Product Specs

### 1 Set Includes

- 18"x36"x3/4" - 1pc
- 24"x24"x3/4" - 1pc
- 36"x36"x3/4" - 1pc



- 18"x36"x3/4" 25.7%
- 24"x24"x3/4" 22.8%
- 36"x36"x3/4" 51.5%



- 18"x36"x3/4" 26%
- 24"x24"x3/4" 23%
- 36"x36"x3/4" 51%





# TIVOLI CREAM



SCAN  
TO WATCH

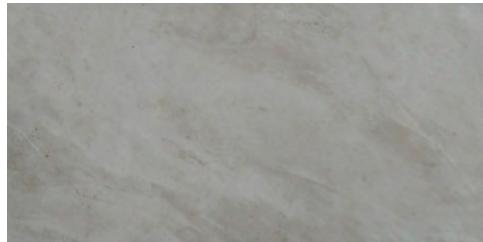


# MINI MODULAR PATTERN

| 3 SIZES |

These sizes can be purchased individually, allowing for both patterned and single-size selections.

## SANDSTONE RECTIFIED



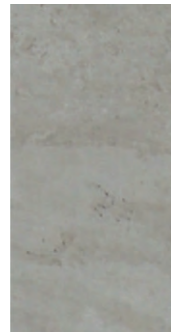
18"x36"



24"x24"



Access  
Product Specs

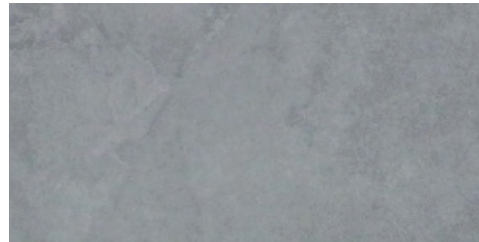


12"x24"



Modular Pattern

## ASH RECTIFIED



18"x36"



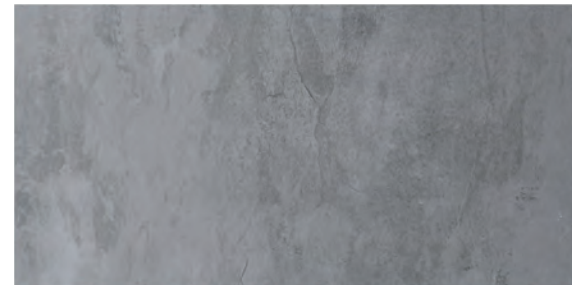
24"x24"



Access  
Product Specs



12"x24"



Modular Pattern

18"x36"x3/4

24"x24"x3/4

12"x24"x3/4

MINI MODULAR PATTERN  
3 SIZES FORMAT



ASH



SCAN  
TO WATCH



# MINI MODULAR PATTERN

| 3 SIZES |

These sizes can be purchased individually, allowing for both patterned and single-size selections.

## COAL RECTIFIED



18"x36"



24"x24"



Access  
Product Specs



12"x24"



Modular Pattern

## METAL RECTIFIED



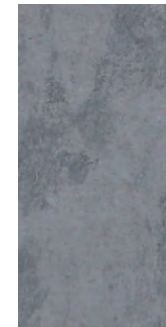
18"x36"



24"x24"



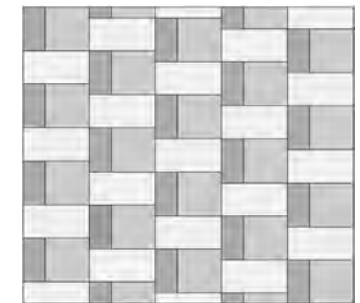
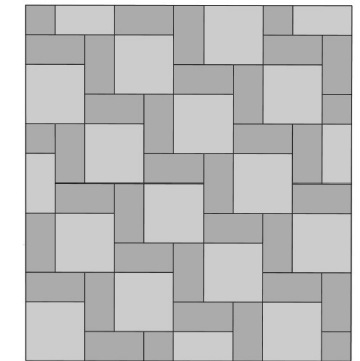
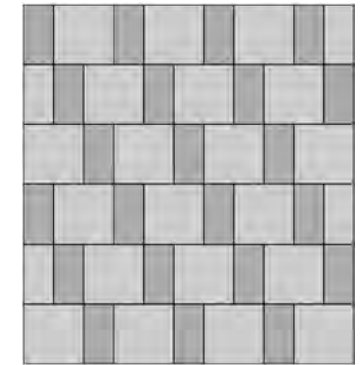
Access  
Product Specs



12"x24"



Modular Pattern



18"x36"x3/4"

24"x24"x3/4"

12"x24"x3/4"

MINI MODULAR PATTERN  
3 SIZES FORMAT



**METAL**



SCAN  
TO WATCH



# MODULAR PATTERN

| 3 SIZES |

<b>1 Set Is 18 sq ft:</b>
24"x36"x3/4 (2pcs) = 66.67%
24"x24"x3/4 (1pc) = 22.22%
12"x24"x3/4 (1pc) = 11.11%

Modular Pattern 3 Sizes Format



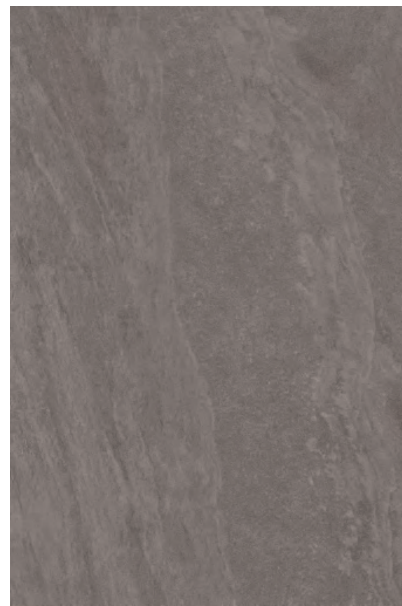
## DARK GREY



12"x24"



24"x24"



24"x36"



Modular Pattern

## LIGHT GREY



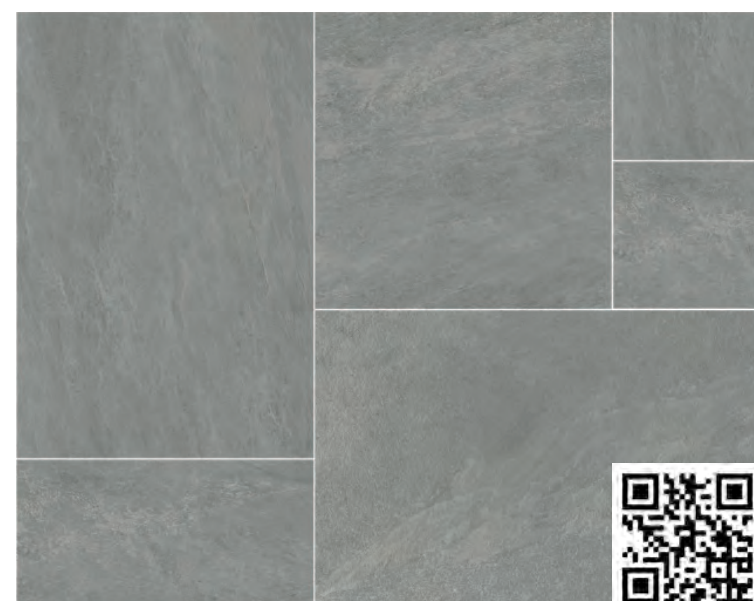
12"x24"



24"x24"



24"x36"



Modular Pattern



Modular Pattern 3 Sizes Format



<b>1 Set Is 18 sq ft:</b>
24"x36"x3/4 (2pcs) = 66.67%
24"x24"x3/4 (1pc) = 22.22%
12"x24"x3/4 (1pc) = 11.11%

## HONEY



12"x24"



24"x24"



24"x36"



Modular Pattern

# MODULAR PATTERN

| 3 SIZES |

## CARAMEL



12"x24"



24"x24"



24"x36"



Modular Pattern



# MODULAR PATTERN

| 3 SIZES |

## MILK



12"x24"



24"x24"



24"x36"



Modular Pattern



1 Set Is 18 sq ft:

24"x36"x3/4 (2pcs) = 66.67%

24"x24"x3/4 (1pc) = 22.22%

12"x24"x3/4 (1pc) = 11.11%

Modular Pattern 3 Sizes Format



## URBAN WHITE



12"x24"



24"x24"



24"x36"



Modular Pattern





Modular Pattern 3 Sizes Format



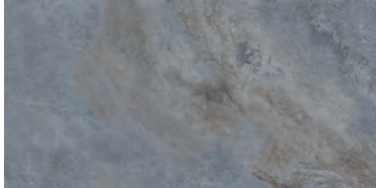
1 Set Is 18 sq ft:

24"x36"x3/4 (2pcs) = 66.67%

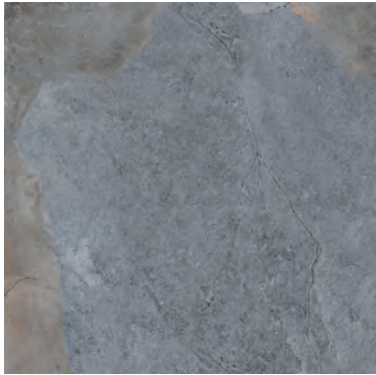
24"x24"x3/4 (1pc) = 22.22%

12"x24"x3/4 (1pc) = 11.11%

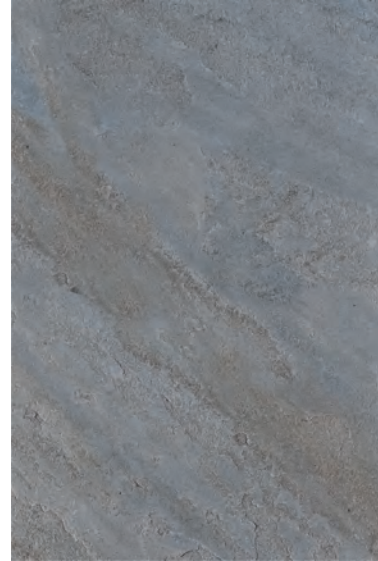
POCONO



12"x24"



24"x24"

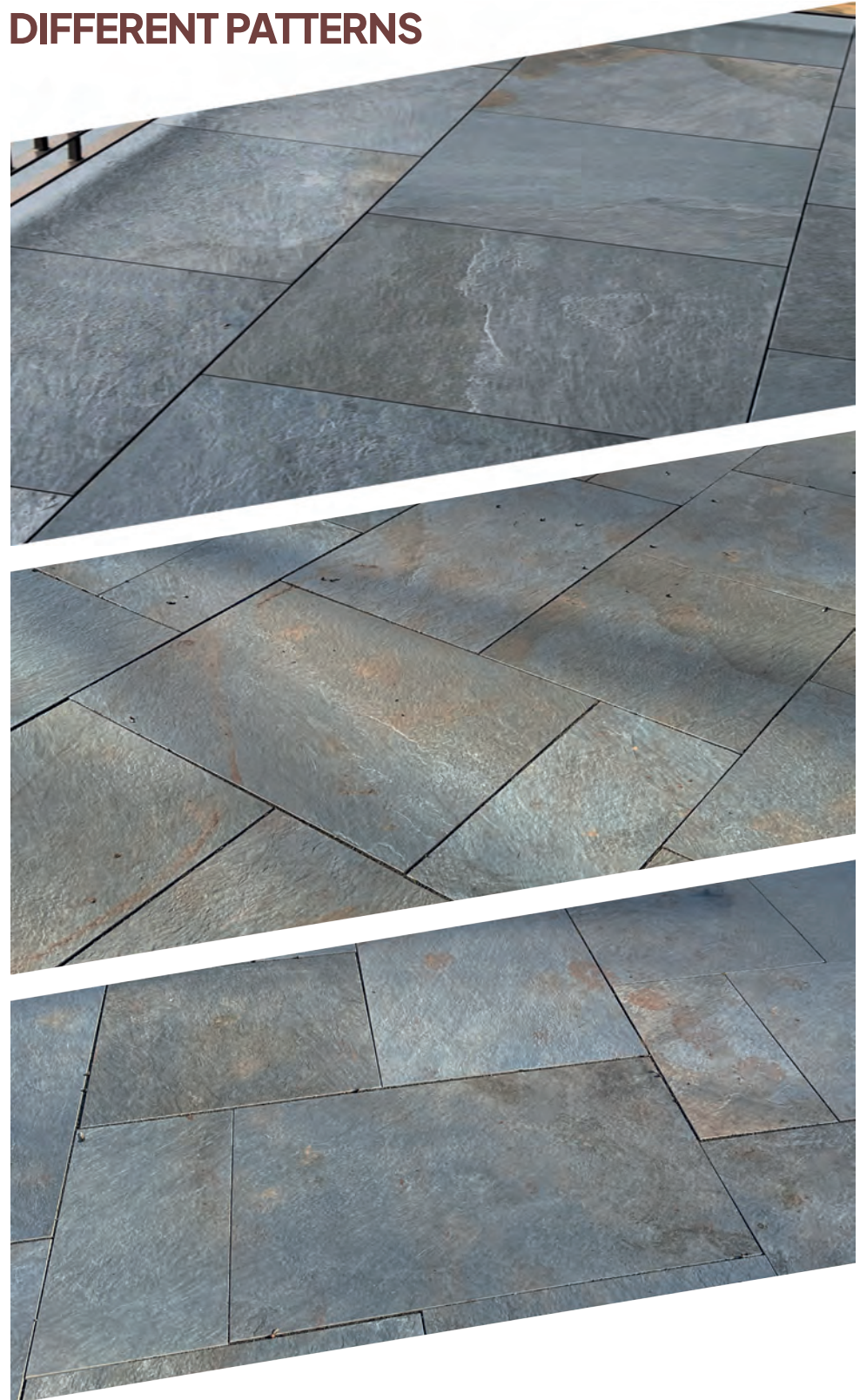


24"x36"



Modular Pattern

DIFFERENT PATTERNS





**LIGHT GREY**



SCAN  
TO WATCH



**URBAN WHITE**



SCAN  
TO WATCH



# COLORS

| 24"x24" |

ABSOLUTE WHITE



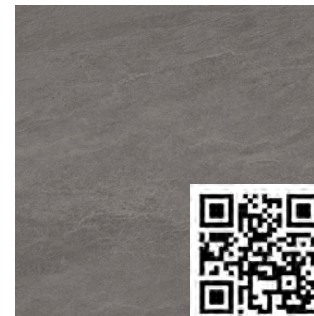
ABSOLUTE BLACK



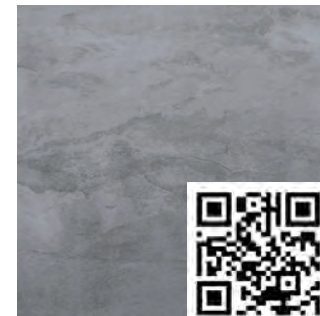
LIGHT GREY



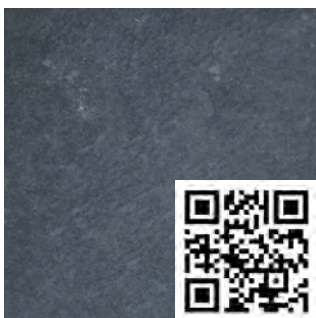
DARK GREY



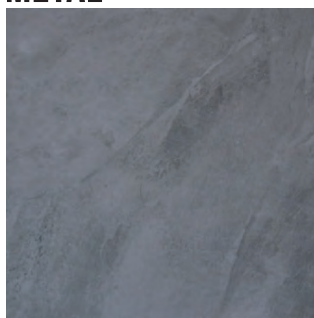
ASH



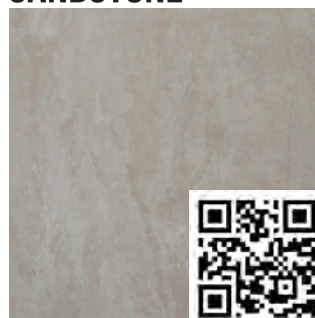
COAL



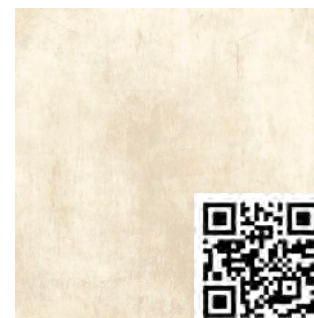
METAL



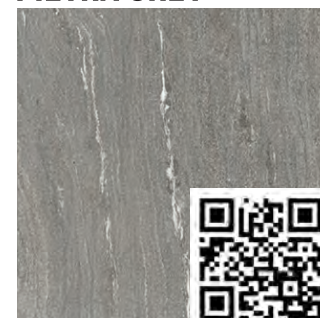
SANDSTONE



SOFT CREAM



PIETRA GREY



RUSTIC GRIGIO



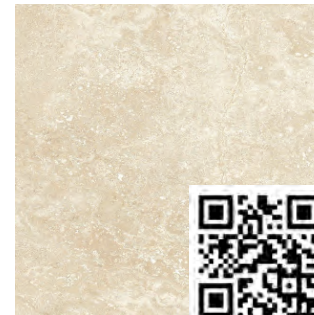
POCONO



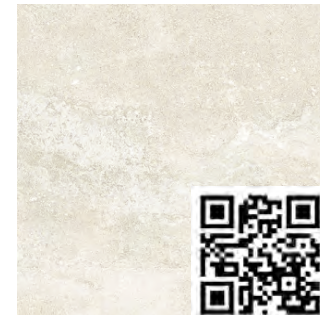
CARAMEL



HONEY



MILK



INOX



GRAPHITE



IRON



LUNAR



OYSTER





| 24"x24" |

## COLORS

SHARK



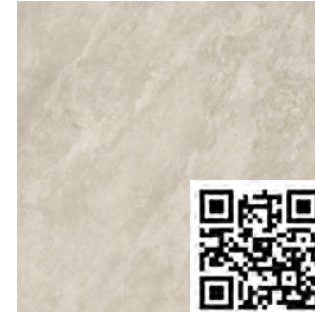
SMOKE



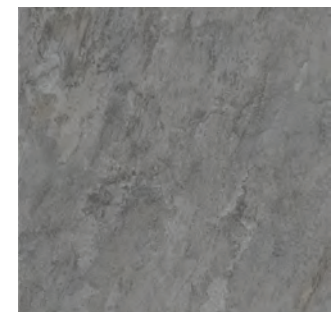
STORM



NEST



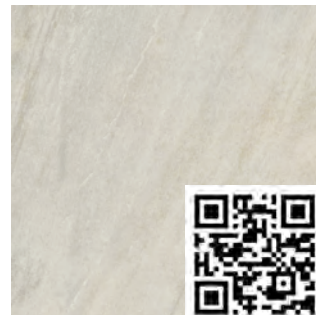
BURNT



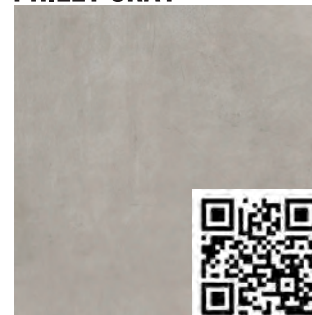
ROCKY



FLAKE



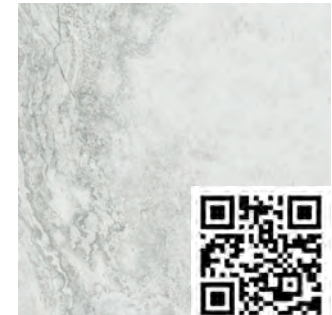
PHILLY GRAY



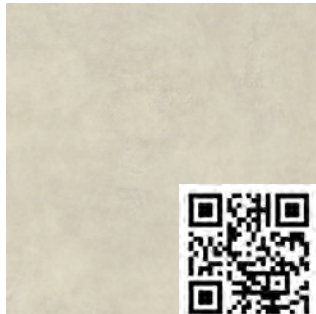
PHILLY TAUPE



URBAN WHITE



PHILLY WHITE



PHILLY BEIGE

IN STOCK IN ITALY





# PIETRA GREY



SCAN  
TO WATCH



# FLAKE & COAL



SCAN  
TO WATCH



# 40"x40" & 32"x32"

CREMA ELEGANTE



40"x40"

OYSTER



40"x40" IN STOCK IN ITALY

STORM



40"x40" IN STOCK IN ITALY

CARAMEL



40"x40" IN STOCK IN ITALY

HONEY



40"x40" IN STOCK IN ITALY

INOX



32"x32"





INOX



SCAN  
TO WATCH



# WOOD LOOK

## CLAY



12"x48"

## TIMBER



16"x48"

## TIMBER



8"x48"

# TIMBER

8"x48"





CLAY





# COLORS | 24"x36" |

## URBAN WHITE



## DARK GREY



## LIGHT GREY



# DARK GREY | 24"x36" |



SCAN  
TO WATCH



**LIGHT GREY** | 24"x36" |



SCAN  
TO WATCH



# COLORS

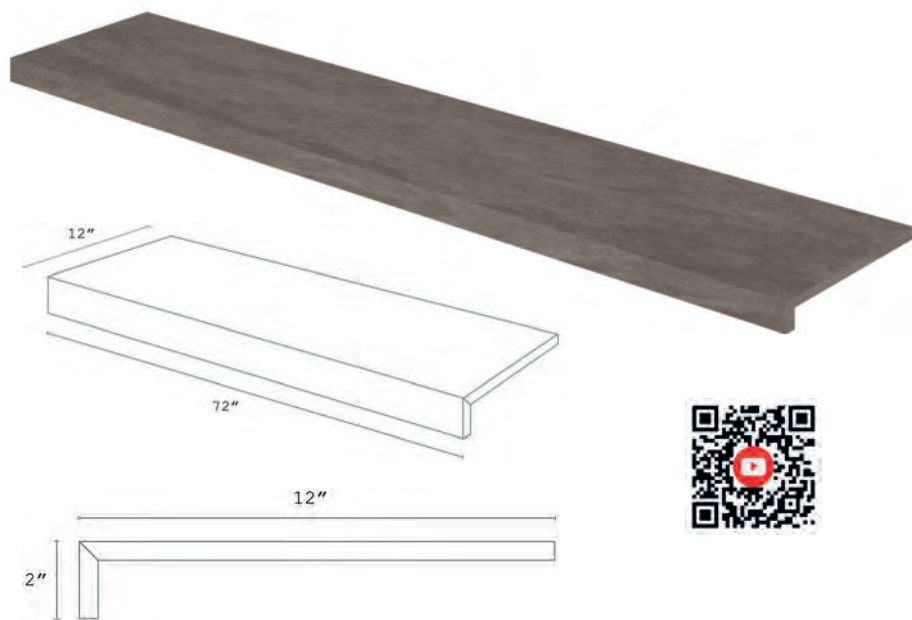
## | PORCELAIN COPINGS

Our porcelain copings can be custom made in any color.

### DARK GREY | MITERED EDGE

12"x72"x2" **\*IN STOCK**

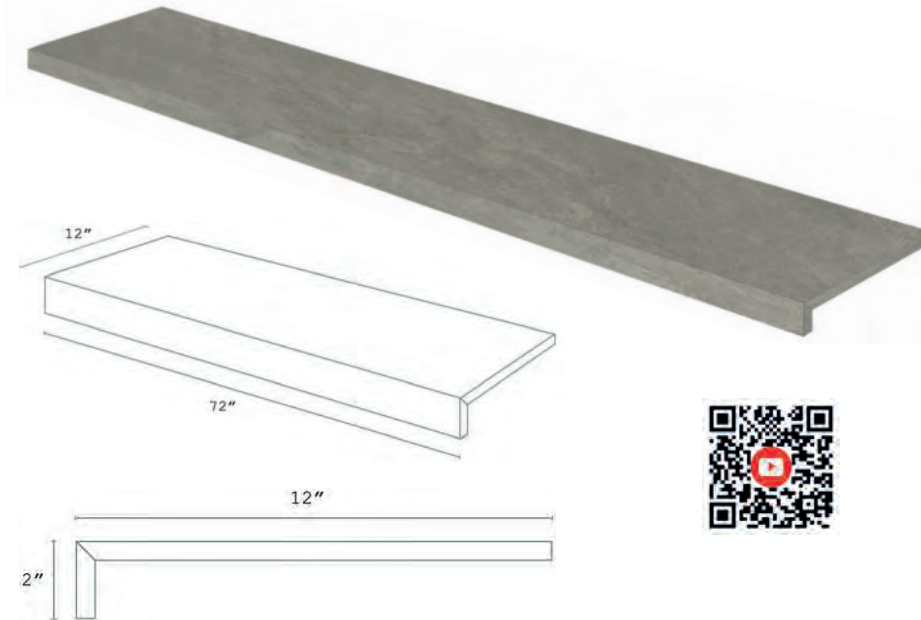
12"x48"x2" **\*Special order made in the USA in two weeks**



### LIGHT GREY | MITERED EDGE

12"x72"x2" **\*IN STOCK**

12"x48"x2" **\*Special order made in the USA in two weeks**



### HONEY



12"x24"x3/4"



### MILK



12"x24"x3/4"



### DARK GREY



12"x24"x3/4"

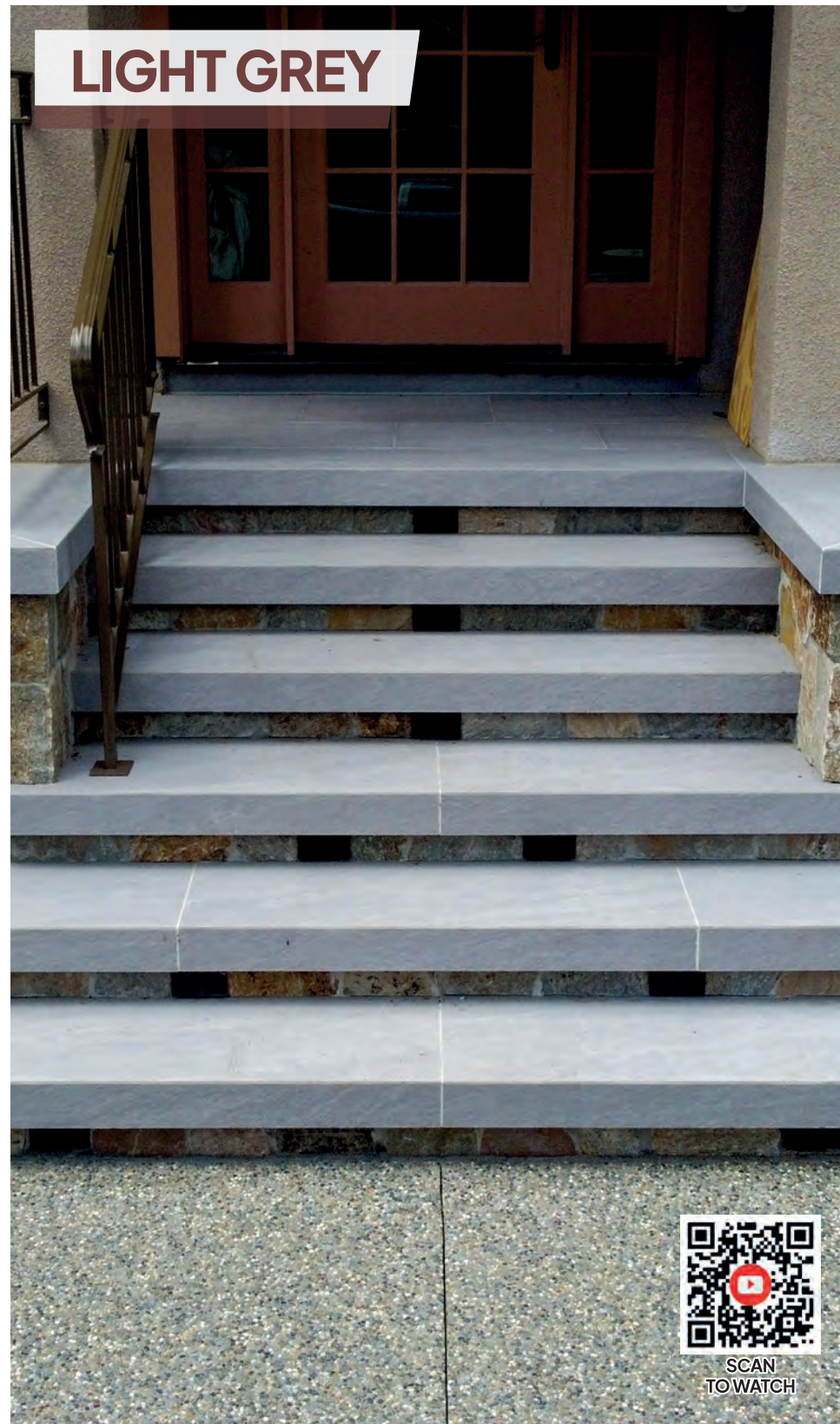




**PHILLY TAUPE**



**LIGHT GREY**



**CARAMEL**





# COLORS

| 24"x48" |

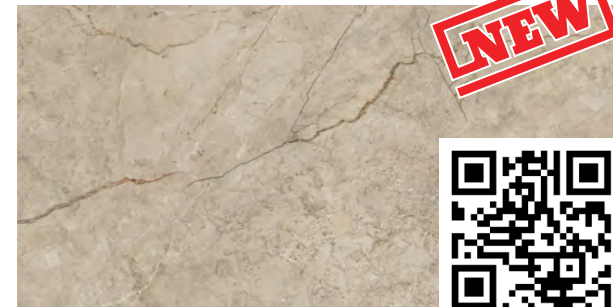
BIANCO CLOUD



FIORITO GREY



SAHARA VEIN



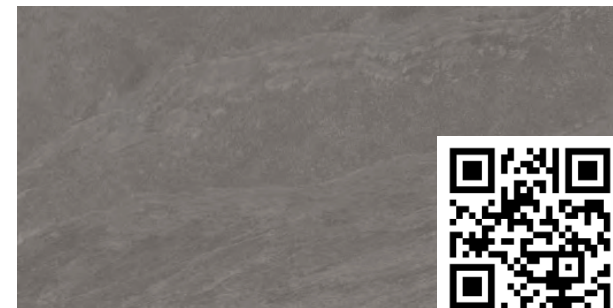
SAHARA MARFIL



LIGHT GREY

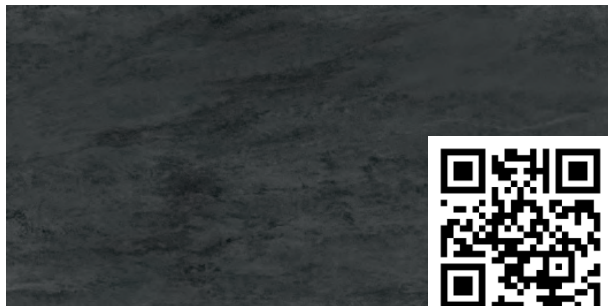


DARK GREY



SLATE

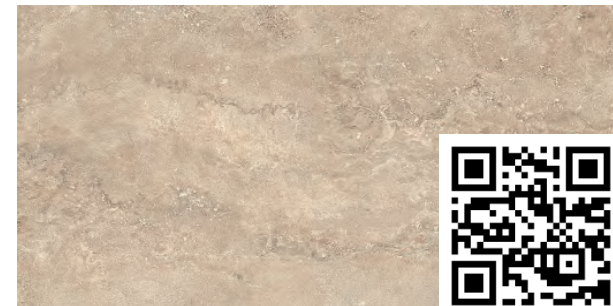
IN STOCK IN ITALY



STORM



CARAMEL



MILK



HONEY



RUSTIC GRIGIO





| 24"x48" |

## COLORS

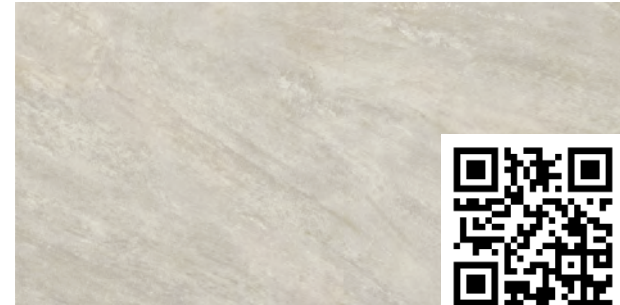
**URBAN WHITE**



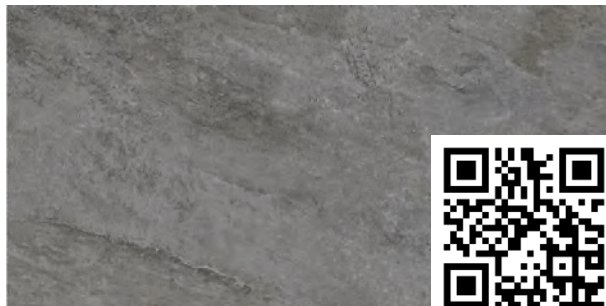
**NEST**



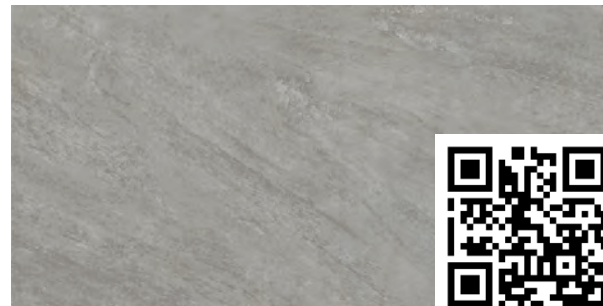
**FLAKE**



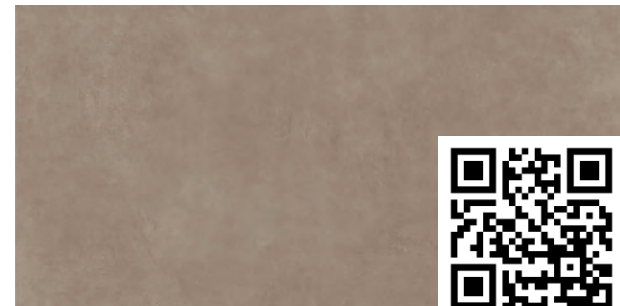
**BURNT**



**ROCKY**



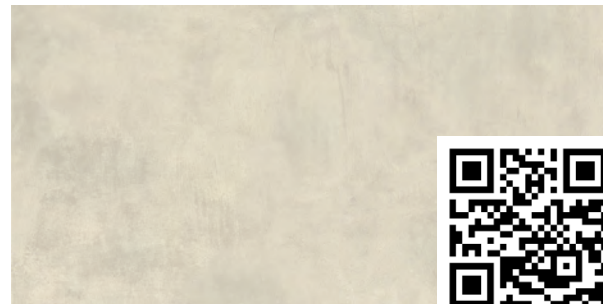
**PHILLY TAUPE**



**PHILLY GREY**



**PHILLY WHITE**

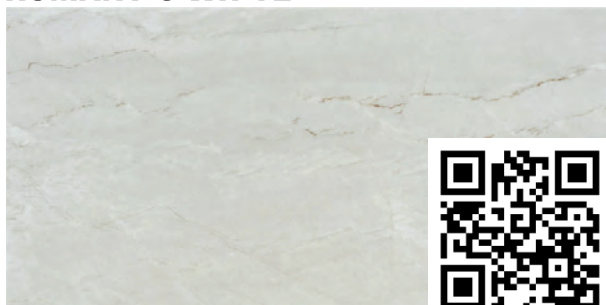


**PHILLY BEIGE**

IN STOCK IN ITALY



**ROMANTIC WHITE**



**ROMANTIC BEIGE**

IN STOCK IN ITALY





# COLORS

| 24"x48" |

LUCE



CHESTNUT VEINCUT



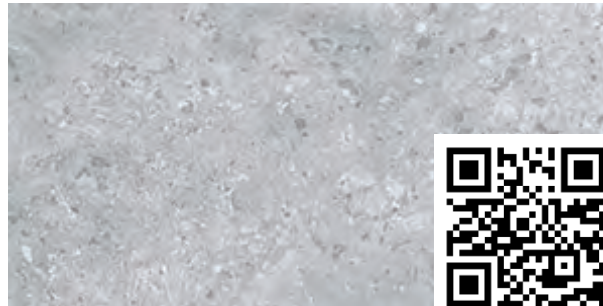
PEARL VEINCUT



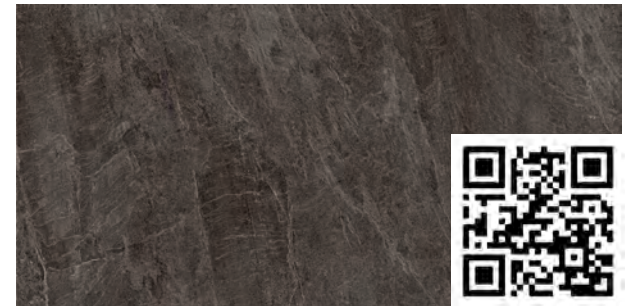
PLATINUM VEINCUT



ARIA



GRAPHITE



IRON



LUNAR



OYSTER



SHARK



SMOKE





# RUSTIC GRIGIO



SCAN  
TO WATCH



# PHILLY GREY



SCAN  
TO WATCH



**LIGHT GREY**



SCAN  
TO WATCH



# COLORS

| 24"x72" | 32"x72" |

**DARK GREY** 24"x72"



**LIGHT GREY** 24"x72"



**LUNAR** 24"x72"



**GRAPHITE** 24x72



**PEARL VEINCUT** 32"x72"



**CHESTNUT VEINCUT** 32"x72"



**PLATINUM VEINCUT** 32"x72"





**LIGHT GREY**



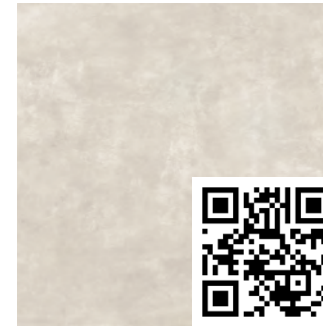
SCAN  
TO WATCH



# COLORS

| 48"x48" |

ASPEN WHITE



IN STOCK

ASPEN GREY



IN STOCK

ASPEN SMOKE



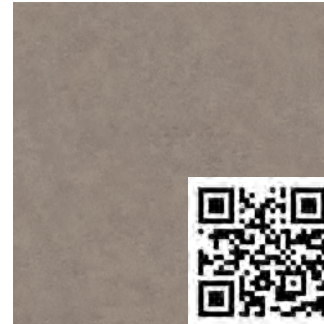
IN STOCK ITALY

KHROMA KORDA



IN STOCK ITALY

KHROMA FANGO



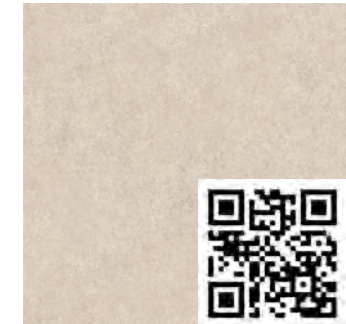
IN STOCK ITALY

KHROMA TALCO



IN STOCK

KHROMA AVORIO



IN STOCK ITALY

OYSTER



IN STOCK ITALY

LUNAR



IN STOCK ITALY

SAND



IN STOCK ITALY

IRON



IN STOCK ITALY

HYPER OBSIDIAN



IN STOCK ITALY

SHARK



IN STOCK ITALY

CLOUDY



IN STOCK ITALY

SAND GLOW



IN STOCK ITALY

SMOKE



IN STOCK ITALY



## ASPEN GREY



SCAN  
TO WATCH



# COLORS | 3 CM PORCELAIN PAVERS |

## SERICA BONE

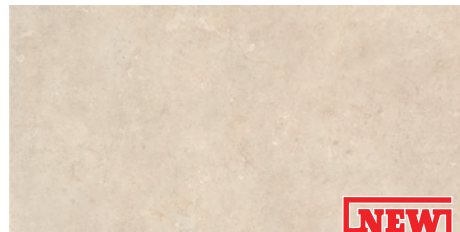


16"x32" - IN STOCK,

**NEW**

## SERICA IVORY

IN STOCK ITALY

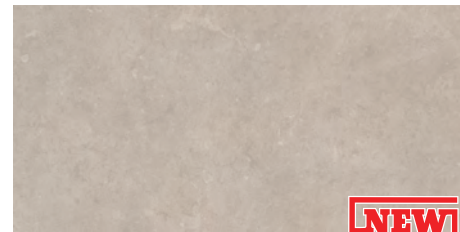


16"x32"  
32"x32"

**NEW**

## SERICA CINDER

IN STOCK ITALY



16"x32"  
32"x32"

**NEW**

## SHELLSTONE BIANCO

IN STOCK ITALY

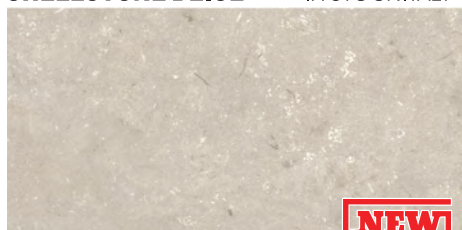


16"x32"

**NEW**

## SHELLSTONE BEIGE

IN STOCK ITALY

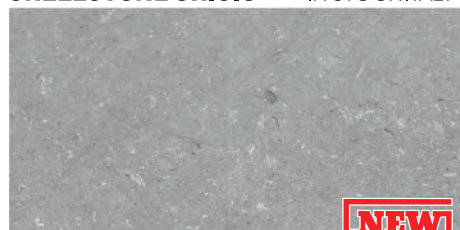


16"x32"

**NEW**

## SHELLSTONE GRIGIO

IN STOCK ITALY

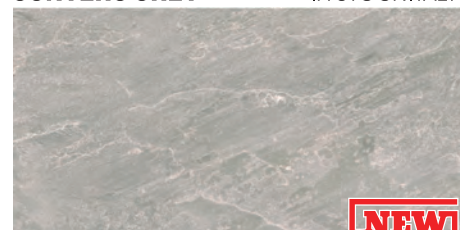


16"x32"

**NEW**

## CONTERO GREY

IN STOCK ITALY

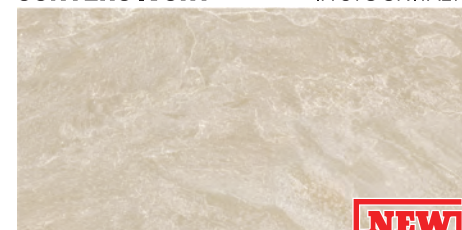


16"x32"  
24"x24"

**NEW**

## CONTERO IVORY

IN STOCK ITALY

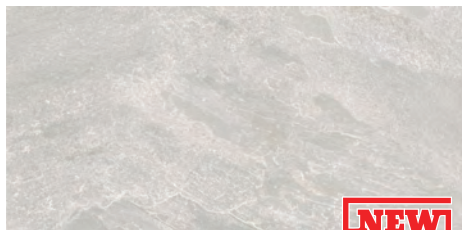


16"x32"  
24"x24"

**NEW**

## CONTERO OFF WHITE

IN STOCK ITALY



16"x32"  
24"x24"

**NEW**

## MASK GRAPHITE

IN STOCK ITALY

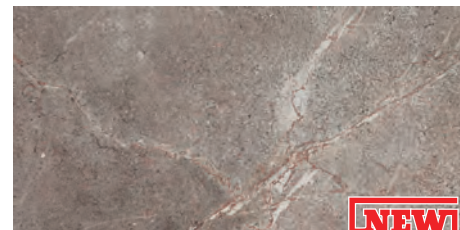


24"x24"

**NEW**

## MASK SILVER

IN STOCK ITALY



24"x24"

**NEW**

## MASK TOBACCO

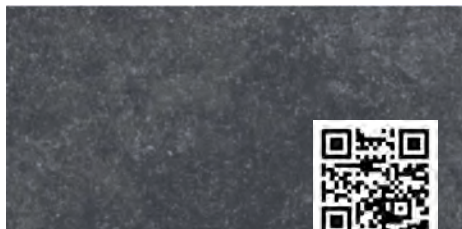
IN STOCK ITALY



24"x24"

**NEW**

## BLUESTONE DARK



16"x32" - IN STOCK  
32"x32"



Access  
Product Specs

## BLUESTONE GREY



16"x32" - IN STOCK  
32"x32"



Access  
Product Specs





**STRATA GRAFITE**



24"X24" - IN STOCK  
32"X"32" - IN STOCK ITALY

**NEW**



**STRATA SABBIA**



24"X24" - IN STOCK  
32"X"32" - IN STOCK ITALY

**NEW**



**STRATA GENERE**



24"X24" - IN STOCK  
32"X"32" - IN STOCK ITALY

**NEW**



# COLORS

| 5 CM ULTRA THICK PORCELAIN PAVERS

| These sizes can be purchased individually, allowing for both patterned and single-size selections.

## GOLDEN BUFF



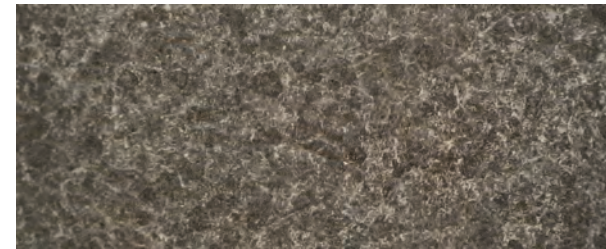
4"x4" - with spacers, 4"x8" - with spacers, 8"x8" - with spacers  
8"x16" - no spacers, 16"x24" - no spacers, 24"x24" - no spacers

## MISTY BLUE



4"x4" - with spacers, 4"x8" - with spacers, 8"x8" - with spacers  
8"x16" - no spacers, 16"x24" - no spacers, 24"x24" - no spacers

## BASALTO



4"x4" - with spacers, 4"x8" - with spacers, 8"x8" - with spacers  
8"x16" - no spacers, 16"x24" - no spacers, 24"x24" - no spacers



## SCARLET ROCK



4"x4" - with spacers, 4"x8" - with spacers, 8"x8" - with spacers  
8"x16" - no spacers, 16"x24" - no spacers, 24"x24" - no spacers

## STORMY ASH



4"x4" - with spacers, 4"x8" - with spacers, 8"x8" - with spacers  
8"x16" - no spacers, 16"x24" - no spacers, 24"x24" - no spacers



**MISTY BLUE**



1 pcs - 4"x4", 2 pcs - 4"x8", 1 pc 8"x8"

**STORMY ASH**



1 pc - 4"x4", 4 pcs - 4"x8", 1 pcs 4"x8"

**BASALTO**



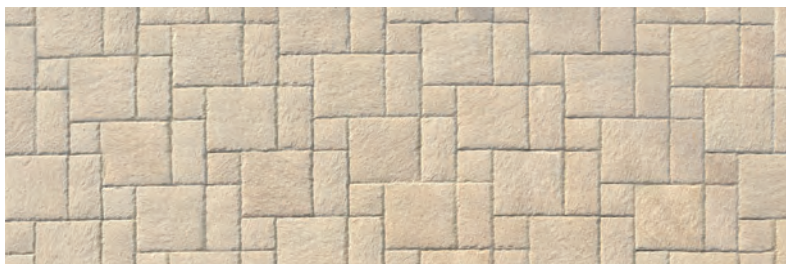
1 pcs - 4"x4", 2 pcs - 4"x8", 1 pc 8"x8"

**SCARLET ROCK**



2 pcs - 4"x4", 1 pc - 4"x8", 1 pc 4"x8"

**GOLDEN BUFF**



1 pcs - 4"x4", 2 pcs - 4"x8", 1 pc 8"x8"



**SPACER**



**NO SPACER**



# COLORS

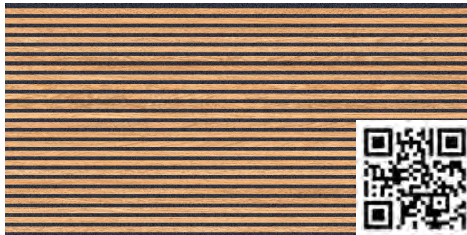
| 3D WOOD LOOK PANELS |

24"X48" 11/32" THICK

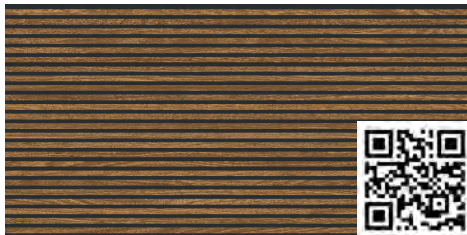
## HONEY



## HONEY BLACK



## BLACK WALNUT



## ECRU



## ECRU BLACK







**GREY**



SCAN  
TO WATCH

## | 3D PORCELAIN LEDGER | **CLAY**

**BEIGE**

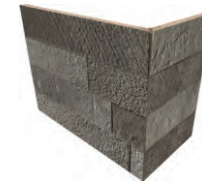


6"x8"x4"



6"x24"

**TAUPE**



6"x8"x4"



6"x24"

**GREY**



6"x8"x4"



6"x24"

**DARK**



6"x8"x4"



6"x24"

**WHITE**



6"x8"x4"



6"x24"

**INSIDE CORNER**



6"x8"x4"

**SPECIAL ORDER**



**WHITE**



SCAN  
TO WATCH



# DRAIN DRIP

## Drain Drip–Terraces Re-Imagined! Highlight 2025

- Accelerated water drainage: reduces slip hazards.
- Faster drying: terraces are ready for use in record time.
- Easy installation: no tools required.
- Durable construction: high-quality materials for long-lasting performance.
- Discreet design: blends subtly with your terrace tiles.

### The Problem With Porcelain–Stone Tiles Outdoors

After rain, large puddles form on porcelain–stone tiles. On **24" × 24"** pavers, up to **50 fl oz** of water can accumulate.

### Why does this happen?

Porcelain–stone absorbs no moisture, and its smooth, straight edges prevent water from escaping. This creates a “water dome” held in place by surface tension — blocking natural drainage. Even in direct sunlight, it can take **up to a full day** for this water to evaporate. The result: unattractive puddles, inconvenience, and slip hazards.

### The Solution: Drain Drip

**Drain Drip** breaks the surface tension of the water dome on porcelain–stone tiles.

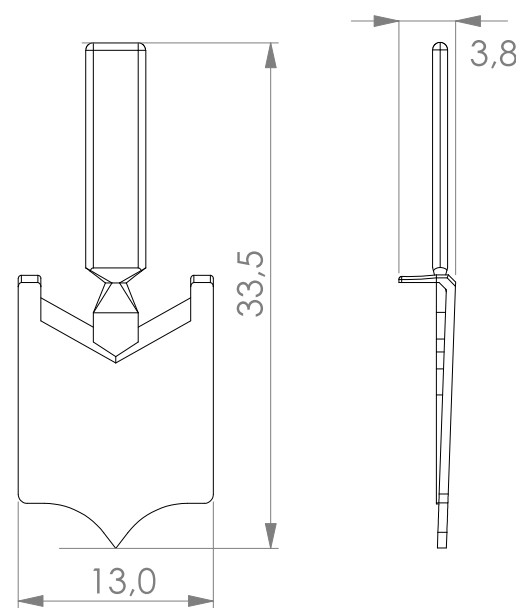
This innovative plastic clip attaches to the tile edge, ensuring water drains quickly and reliably.

### The outcome:

Your terrace dries **dramatically faster** and becomes usable much sooner.



Drainage aid for porcelain stoneware slabs



### Application area:

For porcelain stoneware terrace slabs all formats, loosely laid with open joints. Also suitable for already installed surfaces. Installation using adhesive on the surrounding side edges of the slabs.

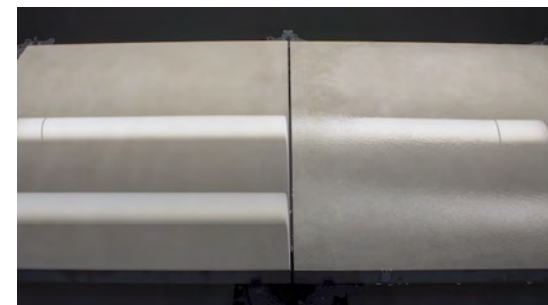
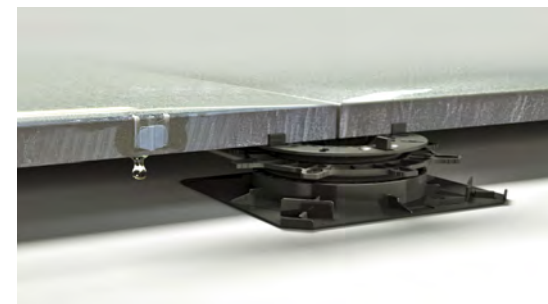
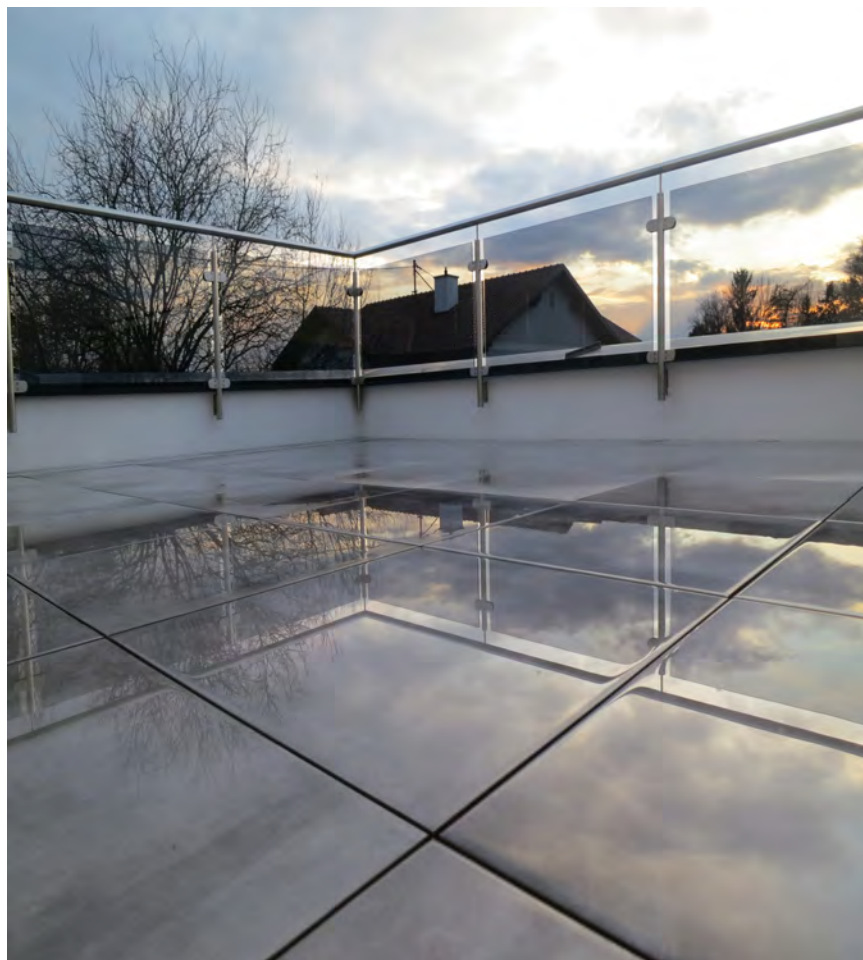
### Technical data:

Material Polycarbonate  
Color transparent

### Properties:

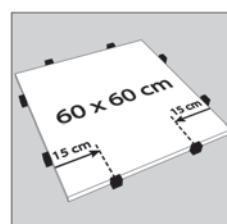
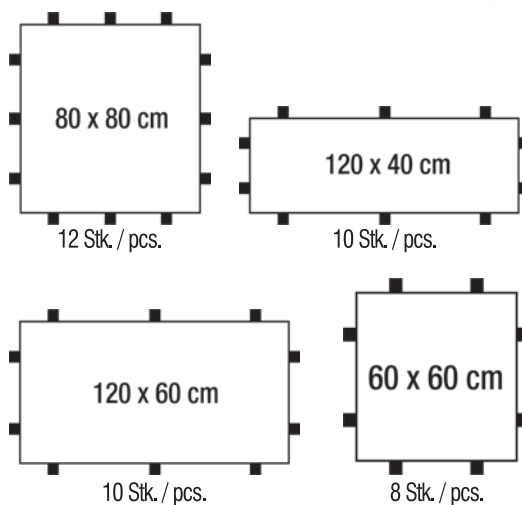
UV stable  
high impact, shock, and break resistance  
weather resistant  
recyclable  
resistant to acids, alkalis, and salts  
temperature resistant from -40 °C to +80 °C



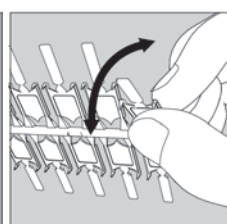


## INSTALLATION

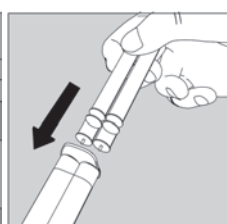
Recommended number of TerraDrain® when laid without slope:



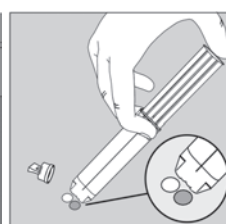
1.Placement on the tile



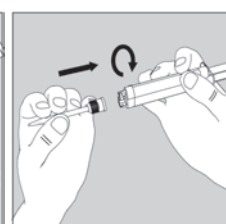
2.Break off and collect the required quantity



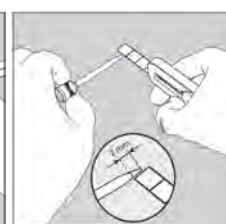
3.Insert plunger



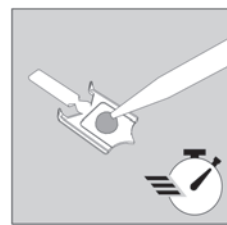
4.Dispense a small quantity of both components



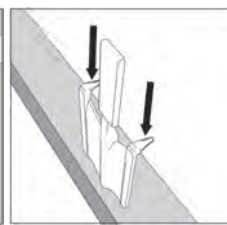
5.Attach mixing nozzle



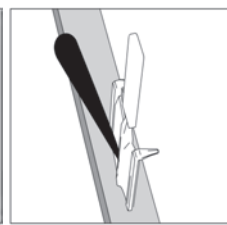
6.Enlarge opening by cutting



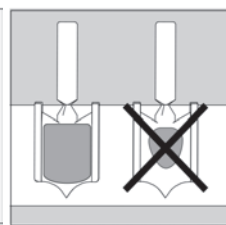
7.Apply adhesive and attach immediately!



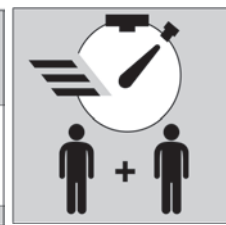
8.Both noses must lie flat (Against the tile surface)



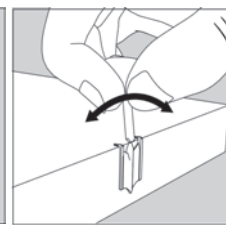
9.Press with wedge



10.Ideal adhesive amount, when installed



11.Work quickly ( As the mixing tip cures )



12.Remove all supports after approximately 90 minutes.








# EQ PEDESTALS & ACCESSORY | IN-STOCK |

**100%**  
MADE IN ITALY

- Quick Water Drainage
- Better Thermal Insulation



Power Key Ambientata T

					
<b>HEIGHT</b>	<b>EQ3</b>	<b>EQ4</b>	<b>EQ5</b>	<b>EQ6</b>	<b>EQ7</b>
	1 1/8" - 1 3/4"	1 11/16" - 2 7/8"	2 3/4" - 5"	4 7/8" - 9 1/4"	7 1/4" - 13 1/2"



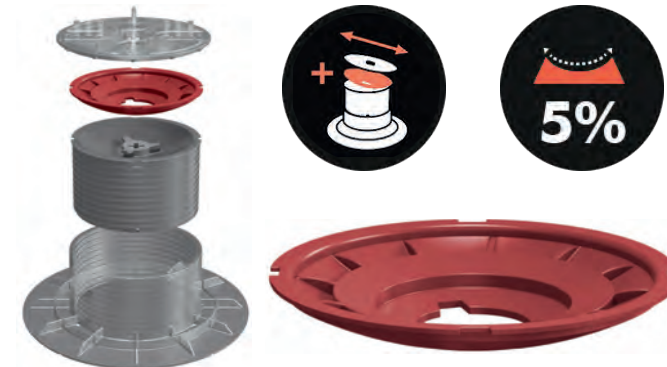
EQ Key



EQ Lucky Shims



Head with three tabs in different thicknesses



Red EQ Slope Adjuster



## ADVANTAGES

- EASY INSTALLATION
- EXCELLENT FOR HIDING AND EQUIPMENT
- ALWAYS A FLAT PAVING AND EASILY ACCESSIBLE
- EXCELLENT ABSORPTION OF STRUCTURAL MOVEMENT
- BETTER ACOUSTIC INSULATION
- HIGHLY RESISTANCE
- SIGNIFICANT LESS WEIGHT



# NT PAVERS





# CLIP UP AND DOWN

Innovative perimeter closure system for outdoor raised flooring, featuring Clip Up No Profile for edges and steps and Clip Down for secure locking. A simple and essential solution for professional installations.

## Product Description:

The Clip Up No Profile and Clip Down system offers a seamless solution for perimeter closure and edge detailing in outdoor raised flooring systems. Designed to work together, these components provide a clean, minimalist finish while ensuring strong and reliable support.

## Key Features:

### Clip Up No Profile:

- Eliminates the need for traditional edge profiles
- Easy to install and integrate into raised flooring systems
- Provides a sleek, clean perimeter finish

### Clip Down:

- Secures tiles firmly for a stable and durable surface
- Compatible with various pedestal heights
- Prevents movement and enhances system longevity

**Material:** High-quality, weather-resistant materials for outdoor durability

**Applications:** Perfect for patios, terraces, and pool decks

## Technical Details:

**System Components:** Clip Up No Profile (edge system) and Clip Down (tile locking system)

**Compatibility:** Designed to work with pedestals and raised outdoor flooring tiles

**Material Strength:** Weather-resistant and UV-stable for outdoor use

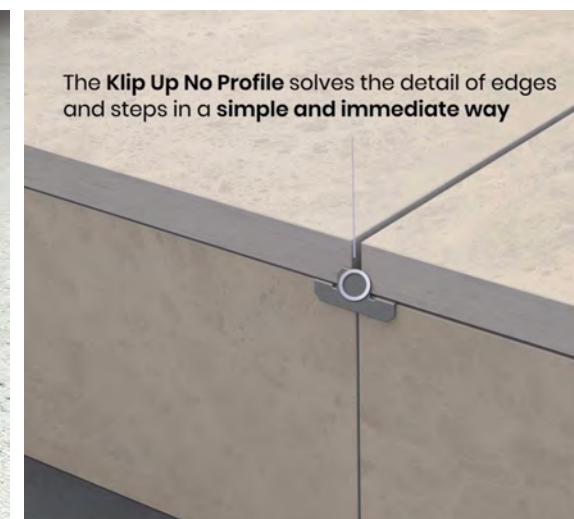
**Color Options:** Neutral gray to blend seamlessly with most tile designs

## Packaging Information:

- **Clip Up No Profile:** 20 pieces per box
- **Clip Down:** 20 pieces per box

## Applications:

- Raised outdoor flooring systems
- Edge detailing for patios and terraces
- Steps and perimeter closures around pool decks





# CLIP WALL SYSTEM

The Clip Wall System is a durable, stainless-steel component designed for vertical wall cladding in raised flooring applications. Offers secure and easy installation for seamless finishes.

## Product Description:

The Clip Wall System is an innovative stainless-steel solution that simplifies vertical wall cladding installations in outdoor raised flooring projects. It ensures a secure attachment of tiles to vertical surfaces, maintaining a clean, professional finish. Engineered for easy integration, the Clip Wall System provides long-term durability and stability, even in challenging outdoor conditions.

## Key Features:

- **Material:** High-grade stainless steel for maximum durability and corrosion resistance
- **Purpose:** Secures vertical wall tiles in raised flooring applications
- **Design:** Sleek, minimalist profile for a professional finish
- **Installation:** Easy-to-use clip design for quick and secure installation
- **Compatibility:** Works seamlessly with raised flooring pedestals and systems

## Technical Specifications:

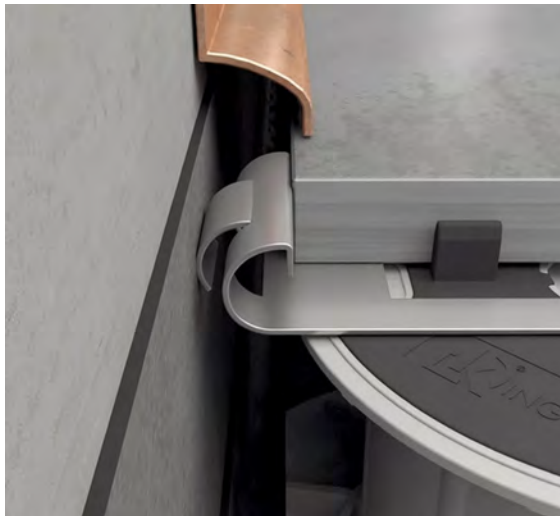
- **Material:** Stainless Steel
- **Dimensions:** Slim, compact design for ease of installation
- **Packaging:** 40 pieces per box
- **Weight per Piece:** Lightweight for easy handling and transport

## Applications:

- Vertical wall cladding in raised flooring systems
- Pool decks and surrounds
- Terraces and patios
- Facades requiring tile attachments

## Installation Instructions:

- 1-Align the Clip Wall System with the vertical surface.
- 2-Attach the clip securely using the appropriate fasteners (not included).
- 3-Insert and secure tiles into the clip for a flush, stable finish.



CASE 1



CASE 2



# ADJUSTABLE PEDESTALS & ACCESSORY

| IN-STOCK |

## ADVANTAGES

- EASY INSTALLATION
- EXCELLENT FOR HIDING AND EQUIPMENT
- ALWAYS A FLAT PAVING AND EASILY ACCESSIBLE
- EXCELLENT ABSORPTION OF STRUCTURAL MOVEMENT
- BETTER ACOUSTIC INSULATION
- HIGHLY RESISTANCE
- SIGNIFICANT LESS WEIGHT
- QUICK WATER DRAINAGE
- BETTER THERMAL INSULATION



PEDCORRECTOR  
Base Slope Corrector  
(0% - 5% Slope Adj)



	E3	E4	E5	E6	E7
HEIGHT	1 1/8" - 1 5/8"	1 9/16" - 2 9/16"	2 3/8" - 4 1/8"	3 1/2" - 7"	7" - 12 5/8"
BREAKING LOAD	1200 lbs	1500 lbs	2250 lbs	1450 lbs	2400 lbs
COMPOSITION	1 base + 1 head (72 pcs/bx) 1 Spacer Tab (400 pcs/bx) 1 Shim (500 pcs/bx)	1 base + 1 head (54 pcs/bx) 1 Spacer Tab (400 pcs/bx) 1 Shim (500 pcs/bx)	1 base + 1 head (48 pcs/bx) 1 Spacer Tab (400 pcs/bx) 1 Shim (500 pcs/bx)	1 base + 1 head (40 pcs/bx) 1 Spacer Tab (400 pcs/bx) 1 Shim (500 pcs/bx)	1 base (48 pcs/bx) 1 extender (60 pcs/bx) 1 head (72 pcs/bx) 1 Spacer Tab (400 pcs/bx) 1 Shim (500 pcs/bx)





Steel Clips For Top And Bottom



Wall Side Perimeter Plastic Spacer

### ADJUSTABLE HEIGHT:

We have a solution height from 1/8" to 50".

### MATERIAL:

Polypropylene(PP), material thickness 4.5mm-6mm;  
Composition 90% PP, 10% talc, UV and black masterbatch  
100% recyclable

### DIMENSIONS:

Head=diameter 5 7/8" - surface area 27.28 sq.inch  
Base=diameter 7 7/8" - ground surface 48.83 sq.inch  
Extender-extender diameter 4 3/4" - adjustable height

### PERFORMANCE:

Resisting UV rays, weather, sea salt and almost all chemicals.  
Temperature range: -40°F to +248°F (-40°C to +120°C).

### APPLICATION:

Support for outdoor terraces with any kind of material: timber decking, stone, ceramic, composite material, metal, fiberglass grid ... Can be placed on any stable substrate, also over insulation panels.

### SLOPE CORRECTOR FROM 0%-5% :

Slope correctors could compensate ground fall 0%-5%, making ideal levelling surface. It is assembled on the bottom of pedestals. Clients could choose to use it or not with different installing condition.

### FIX COLLAR: Fix and lock height after adjustment, increase stability

**SHIM:** Anti-slip, reduce impact, absorb shock, compensate floor thickness difference.



Fireproof Steel Pedestal



Scan For Pedestal  
Installation Process Video

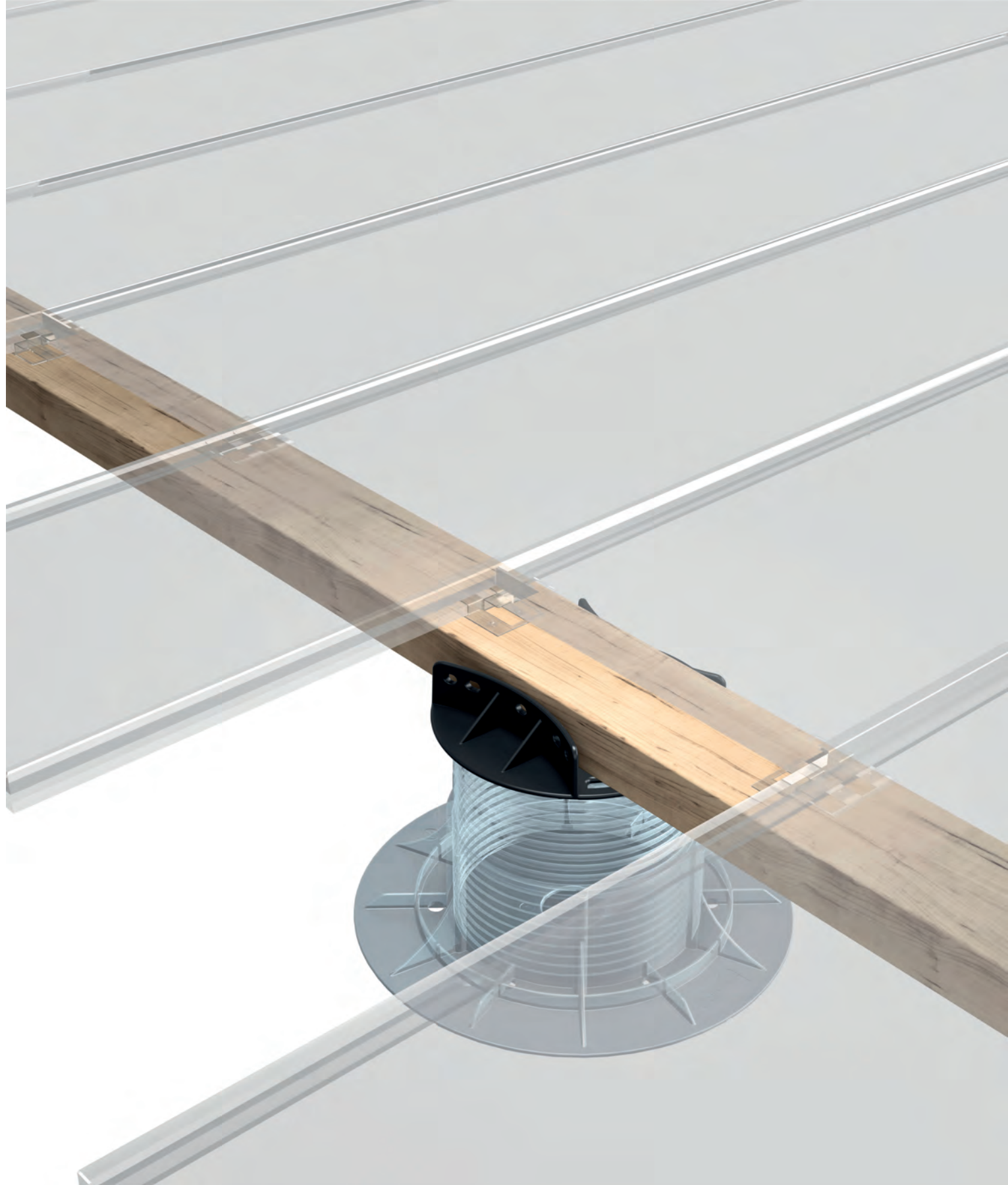


## QUEEN CROWN

The polypropylene head Queen Crown, designed for laying floors, it hooks onto the screw of the supports Queen Interlocking. Queen Crown offers a pair of stable vertical bulkheads with an exclusive curved geometry for fixing joists of various sizes, which are secured to the system with the aid of simple screws.

### Self-leveling and fixed

Queen Crown thanks to its exclusive conformation it allows to maintain the advantage of the double valence of the head, fixed or self-leveling. Its rounded bulkheads offer the ultimate versatility and freedom in the choice of joists to be used for laying planks.





# PAVER BASE SYSTEM

Lightweight and durable 24"x36"x3/4" paver base panels, designed to replace traditional crushed stone bases. Ideal for patios, driveways, and walkways, reducing installation time and excavation depth.

## Product Description:

The Paver Base Panel is an innovative solution for paver installation, offering a lightweight and cost-effective alternative to traditional granular bases. Designed with a tongue and groove system, these interlocking panels provide enhanced stability, reduced installation time, and better frost protection. Ideal for large-format pavers and slabs, the Paver Base Panel minimizes excavation depth and installation labor while ensuring optimal performance under dynamic loads.

## Key Benefits:

- **Saves 6" of crushed stone base:** Reduces excavation depth and disposal requirements.
- **Cost-effective:** Saves at least 20% on labor costs and overall installation time.
- **Lock-N-Go System:** Easy-to-install tongue and groove design for seamless interlocking.
- **Frost Protection:** Enhanced resistance against freeze-thaw cycles.
- **Compatible with Heated Systems:** Usable in paving systems up to 122°F.
- **Rain-Tolerant:** Performs well under wet installation conditions.

## Technical Specifications:

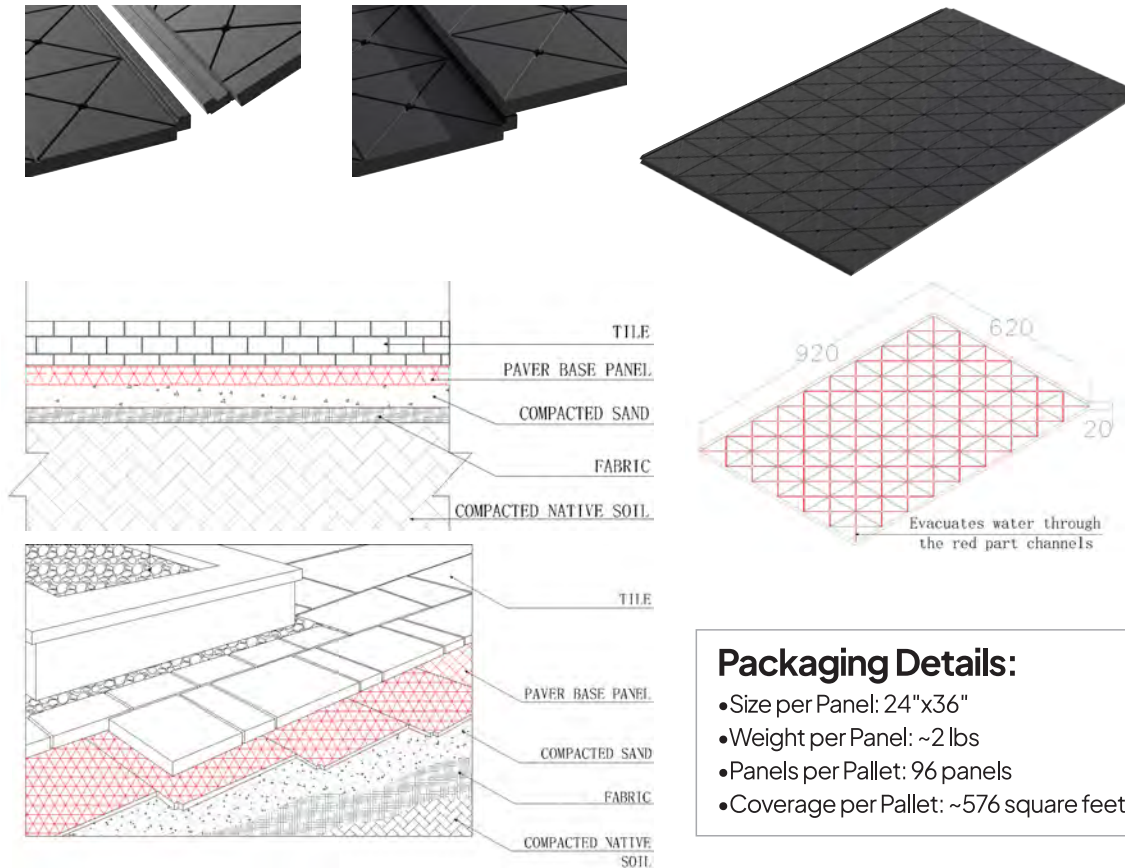
- **Material:** Expanded Polypropylene (EPP) – Black Foam Beads
- **Molded Density:** 3.74 lbs/ft<sup>3</sup>
- **Tensile Strength:** 138.6 psi
- **Compression Stress:**
  - At 25%: 65.2 psi
  - At 50%: 75.9 psi
- **Compression Set:** 37.66%
- **Flammability:** 1.58 inches/min
- **Bead Size:** 0.08 ± 0.02 inches
- **Bulk Density:** 3.13 ± 0.19 lbs/ft<sup>3</sup>

## Product Features:

- **Snapping Edge:** Reinforces perimeter stability and lateral strength.
- **Spacer Tabs:** Create a drainage gap between pavers for better water management.
- **Paver Base Panel:** Provides durable support for various paver finishes.
- **Edge Spike:** Secures edges with precision fastening for long-term stability.

## Applications:

- Driveways • Walkways • Patios • Pool Decks • Large-format pavers and slabs



Scan For  
Installation  
Process Video



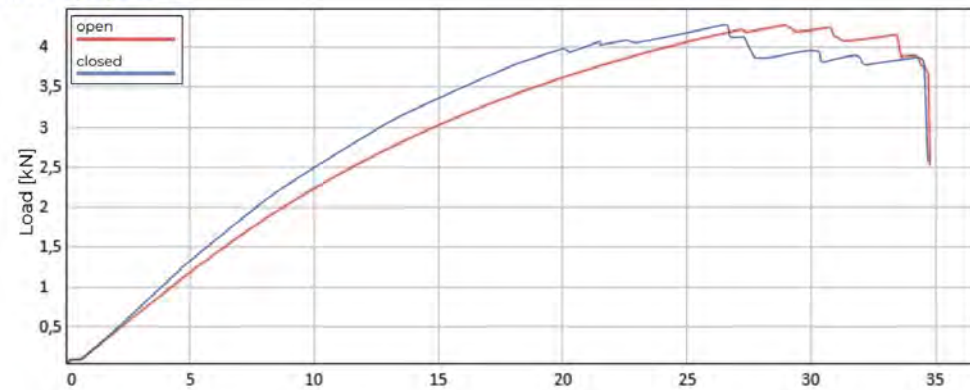
# PLASTIC SAFETY GRID | 20"x20" |

The Plastic Safety Grid creates a safe, strong, stable, and perfectly level substructure ( without any lippage) for external raised floors.

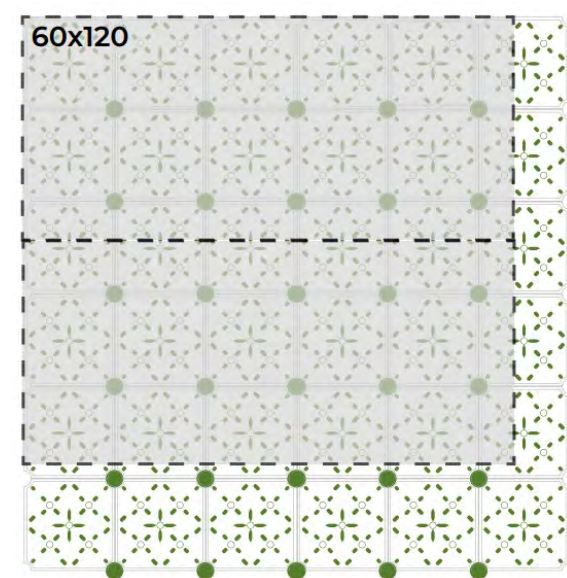
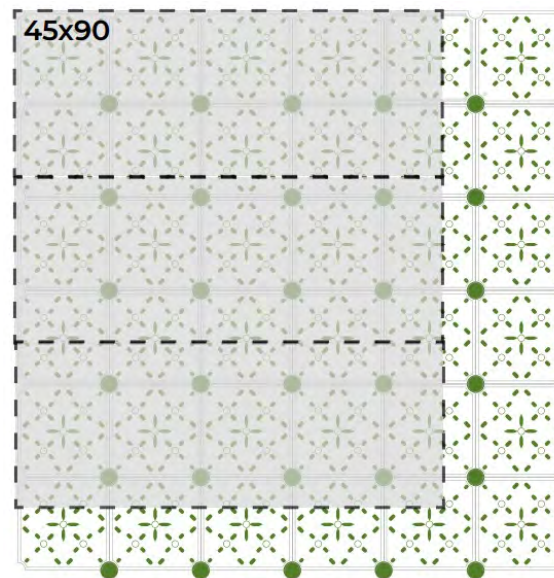
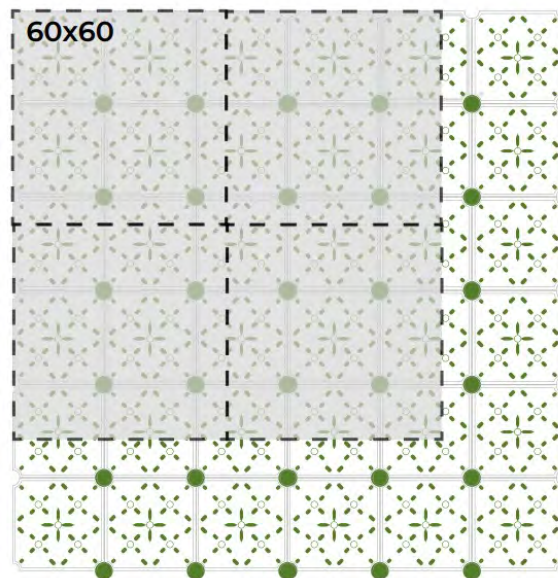
| 132 pcs/pallet |

## Load Test:

Load curve/Displacement



## Laying and Compatibility:



Shim



Plastic Safety Grid



Locking Ring

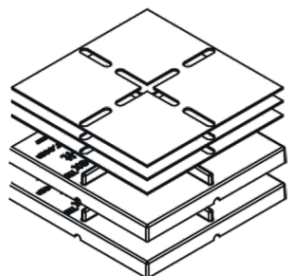


## PLASTIC SAFETY GRID





# RISE-IT



Risers can be stacked 3 pcs high with an elevation of 1/2" increments. Up to 4 shims can be used in conjunction in 1/16" increments for optimal levelling. Spacer tab thickness is 3mm.

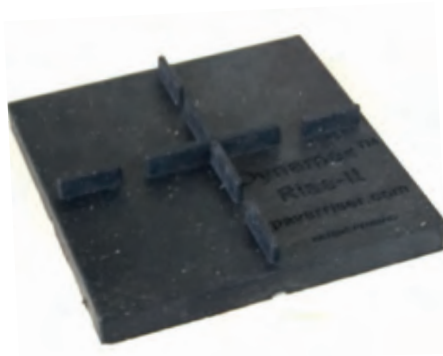


Spec Sheet

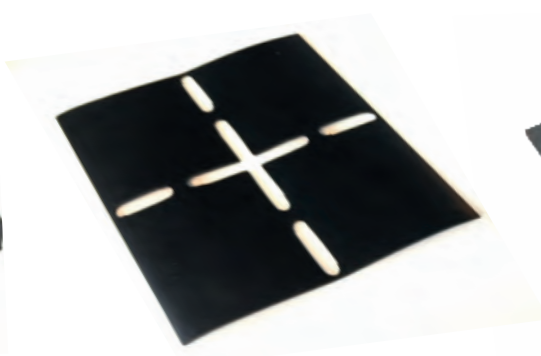


## APPLICATIONS

- ROOFTOPS
- TERRACES & DECKS
- PATIOS
- BALCONIES, VERANDAS & PORCHES
- AROUND SWIMMING POOLS
- BETTER THERMAL INSULATION



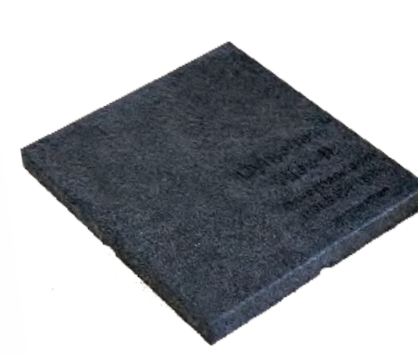
Rise-It 1/2"



Rise-It Shim 1/16"

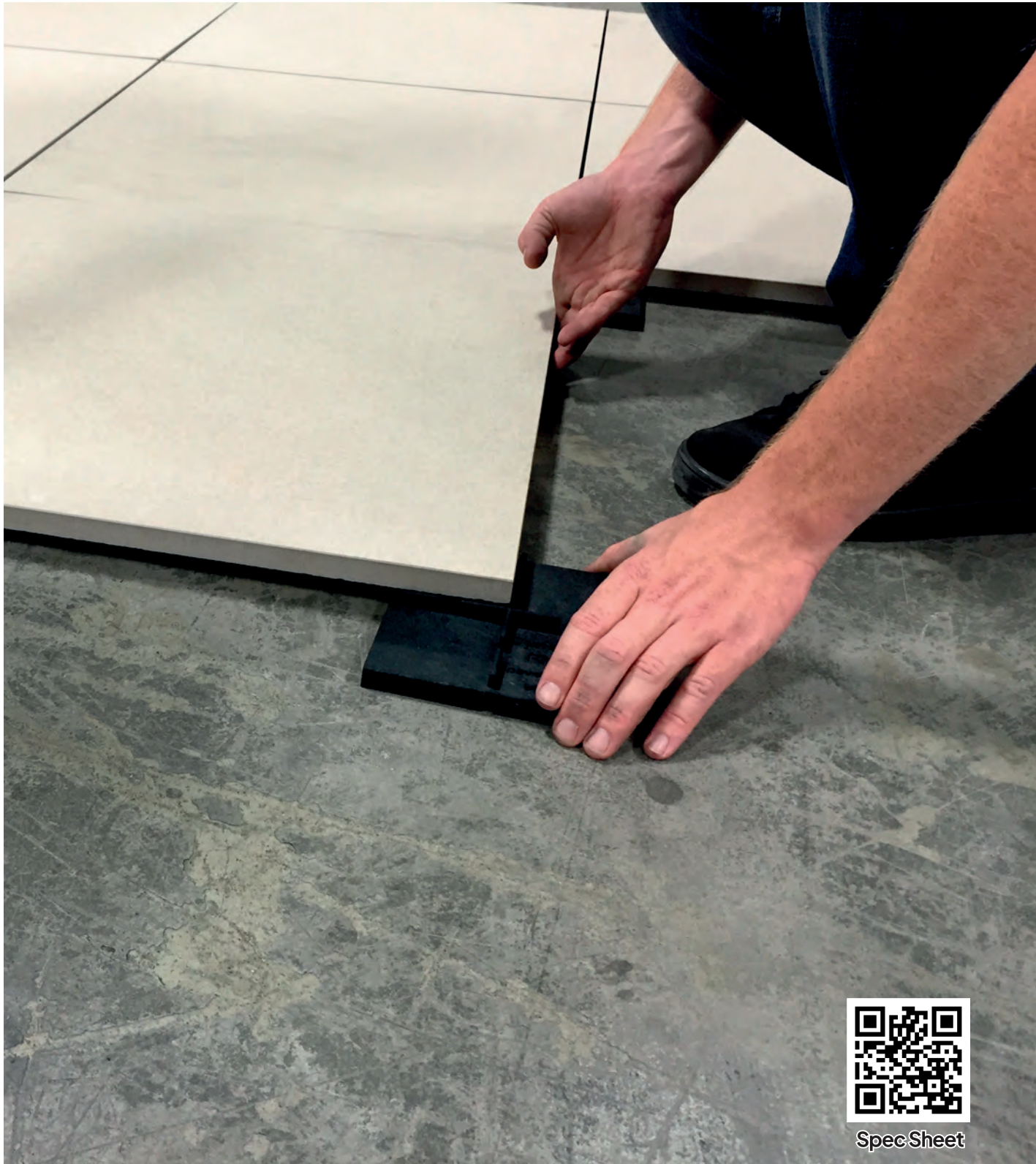


Rise-It 1/8"

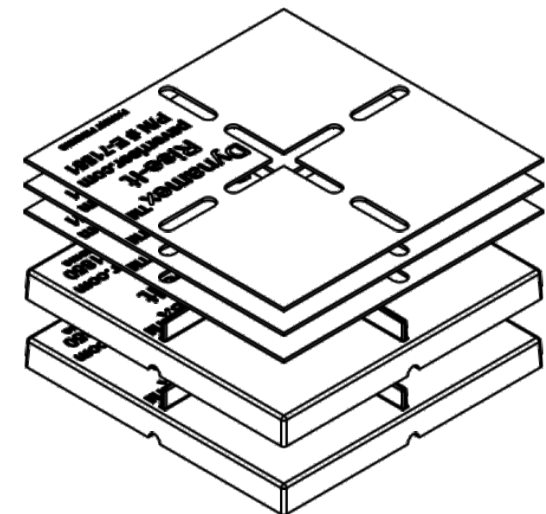
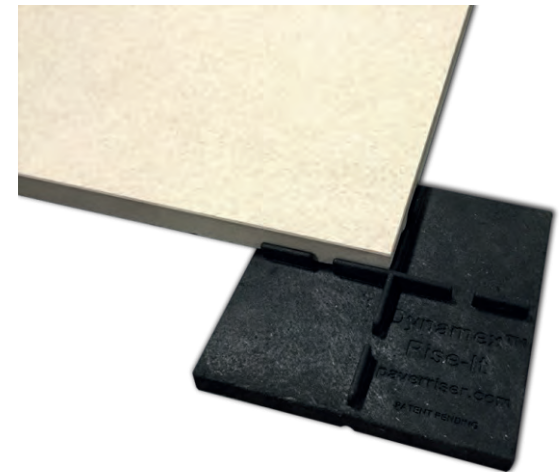


Rise-It Flat Top



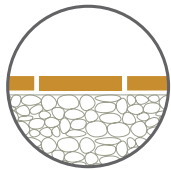


Spec Sheet





# DRY INSTALLATION ON GRAVEL



THIS TYPE OF INSTALLATION IS RECOMMENDED FOR WALKABLE FLOORS.

PORCELAIN 2CM PAVER IS INSTALLED ON THE SUBSTRATE WITHOUT USING ADHESIVES OR FILLERS, THEREBY.

CREATING WALKWAYS THAT CAN BE WALKED ON IMMEDIATELY. INTEGRATED AND ENVIRONMENTALLY-FRIENDLY.

INSTALLATION ON GRAVEL HAS THE ADVANTAGE OF ALLOWING THE DRAINAGE OF RAINWATER.



## INSTALLATION INSTRUCTIONS

- LEVEL THE GRAVEL
- POSITION THE TILE
- USE CROSS SPACERS



SCAN TO WATCH





# DRY INSTALLATION ON SAND



INSTALLATION ON SAND IS PARTICULARLY SUITABLE FOR BEACHES AND LIDOS (ESPECIALLY IN LIGHT COLOURS).

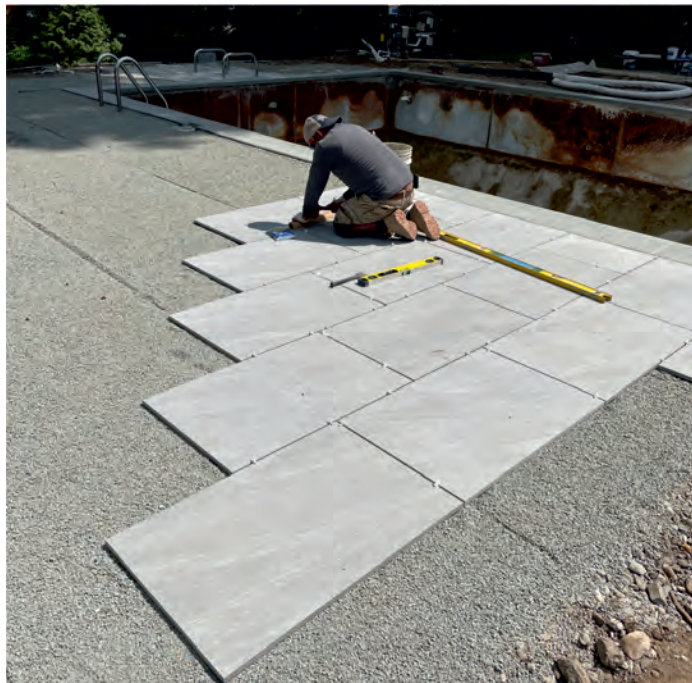


## INSTALLATION INSTRUCTIONS

LEVEL THE GRAVEL •

POSITION THE TILE •

USE CROSS SPACERS •



SCAN  
TO WATCH





# DRY INSTALLATION ON GRASS

## INSTALLATION INSTRUCTIONS

- LAY THE TILES BY SPACING THEM DEPENDING ON THE DESIRED AESTHETIC EFFECT AND REMOVE THE GRASSY SURFACE
- SPILL THE GRAVEL AND SAND STABILISER TO IMPROVE THE TIGHTNESS OF THE SUBSTRATE
- POSITION THE TILE





# TRADITIONAL INSTALLATION ON SCREEDS

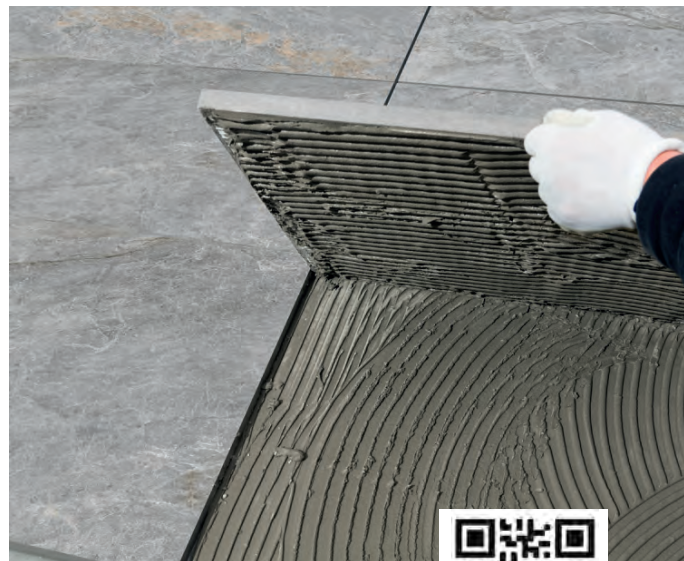


THE EXTRAORDINARY  
RESISTANCE OF THIS  
20 MM FINE PORCELAIN

STONEWARE MEANS  
POCELAIN 2 CM PAVER  
LAID WITH

THE TRADITIONAL  
TECHNIQUE ON  
SCREEDS, IS THE  
IDEAL.

SOLUTION ALSO FOR  
PAVING DRIVEWAYS.



PLEASE CHECK THE SUPPORT CAPACITY AND QUALITY  
OF THE LAYING SURFACE BEFORE INSTALLING THE TILES  
LASTLY, A MINIMUM SLOPE IS ADVISED OF 1.5%.

## INSTALLATION INSTRUCTIONS

- SPREAD THE ADHESIVE  
EVENLY USING THE DOUBLE  
COATING TECHNIQUE (BOTH  
ON THE SUBSTRATE AND ON  
THE BACK OF THE TILE)

- POSITION THE TILE
- USE CROSS SPACERS  
(5 MM JOINTS)

- GROUT THE FLOOR
- CLEAN THE SURFACE  
THOROUGHLY

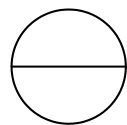


SCAN  
TO WATCH

THIS TYPE OF INSTALLATION REQUIRES OPTIMAL COPLANARITY  
OF THE SCREED, DOUBLE LAYER OF ADHESIVE, AND 5 MM JOINTS  
BETWEEN THE SLABS.



# STANDARD DRAIN – SLOTTED HOLE PATTERN DRAIN



## PORCELAIN PAVERS

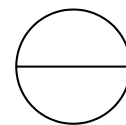
REFERENCE NUMBER 5549-011.

STANDARD HOLE DRAIN DESIGN  
5549-011

REVISION DATE 18/04/2024

PROTECTED BY COPYRIGHT ©2024 CADDETAILS.COM LTD.

CADdetails.com



## PORCELAIN PAVERS

REFERENCE NUMBER 5549-013.

SLOTTED HOLE PATTERN DRAIN DESIGN  
5549-013

REVISION DATE 18/04/2024

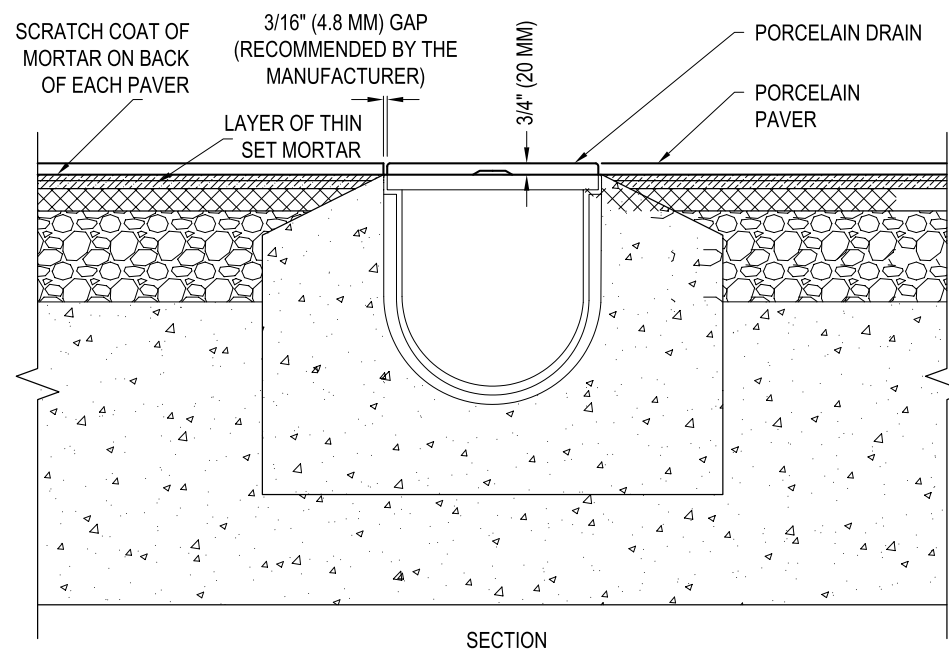
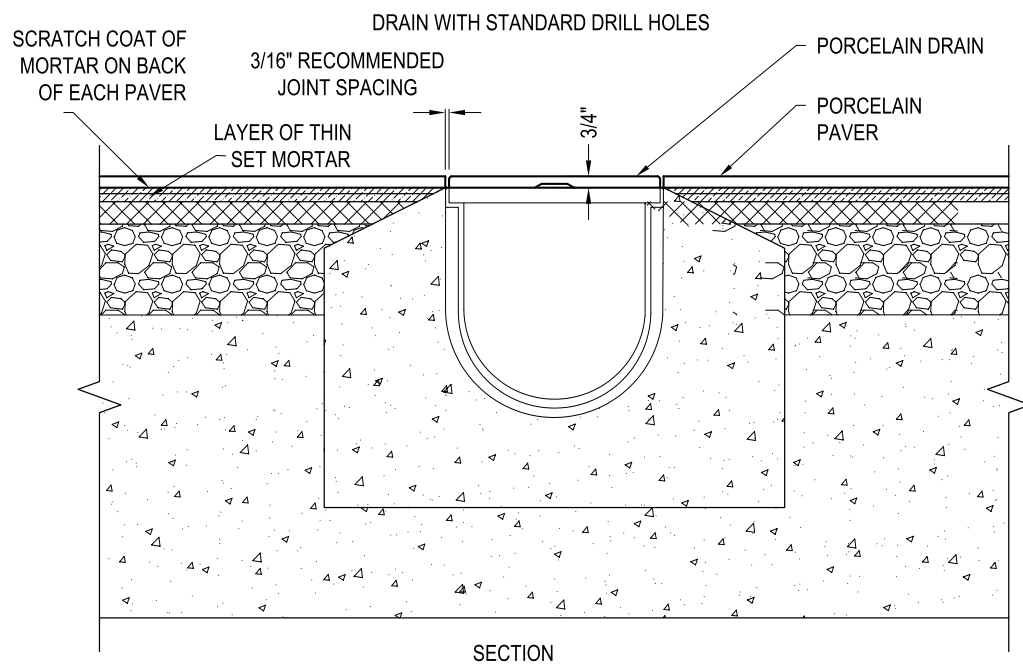
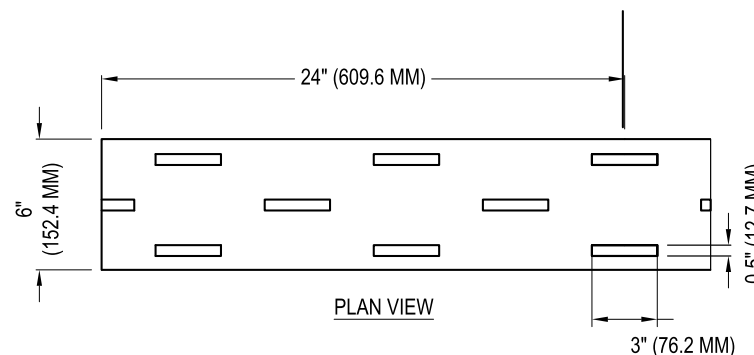
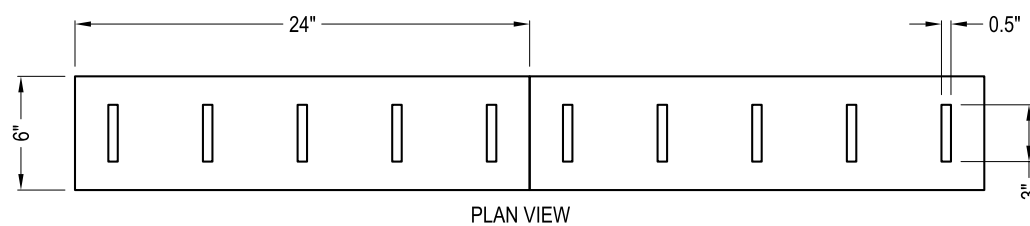
PROTECTED BY COPYRIGHT ©2024 CADDETAILS.COM LTD.

CADdetails.com

☒ SELECT DESIRED DRILL HOLE OPTION:

☐ STANDARD (SHOWN)

☐ CUSTOM ORDER: \_\_\_\_\_



### NOTES:

1. DO NOT SCALE DRAWING.
2. THIS DRAWING IS INTENDED FOR USE BY ARCHITECTS, ENGINEERS, CONTRACTORS, CONSULTANTS AND DESIGN PROFESSIONALS OR PLANNING PURPOSES ONLY. THIS DRAWING MAY NOT BE USED FOR CONSTRUCTION.
3. CONTRACTOR'S NOTE: FOR PRODUCT AND COMPANY INFORMATION VISIT [www.CADdetails.com/info](http://www.CADdetails.com/info) AND ENTER

### MANUFACTURER'S NOTES:

1. ALL SIZES LISTED ARE NOMINAL



# CUSTOM COPINGS & DRAINS

| CUSTOM FABRICATION IN TWO WEEKS IN NEW JERSEY |





# PLATINUM VEINCUT



SCAN  
TO WATCH



# ABSOLUTE BLACK

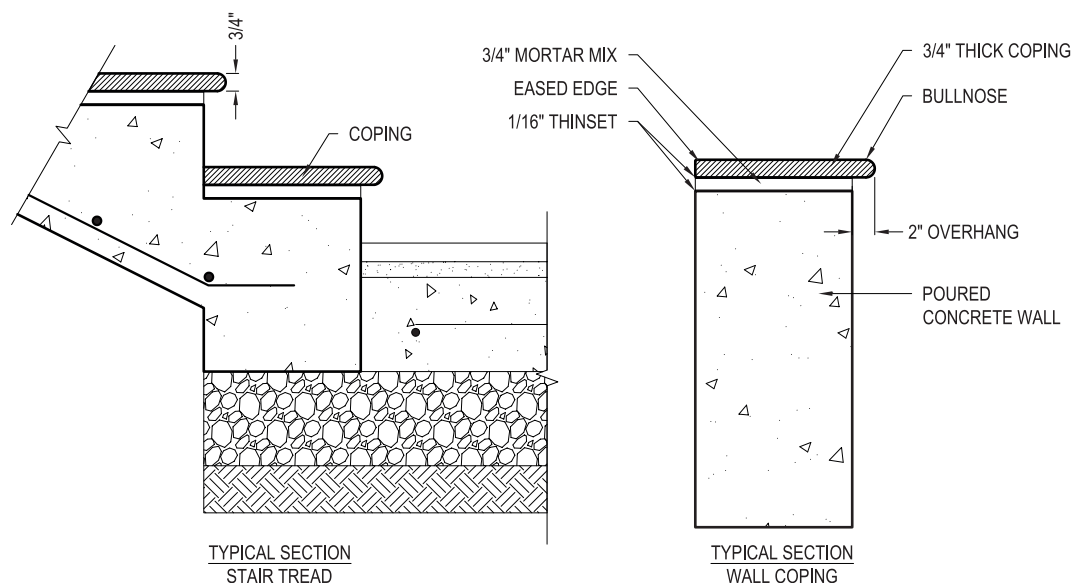




# FOR DESIGNERS AND ARCHITECTS

☒ SELECT DESIRED COLOR:

☐ HONEY ☐ MILK ☐ CUSTOM FABRICATION

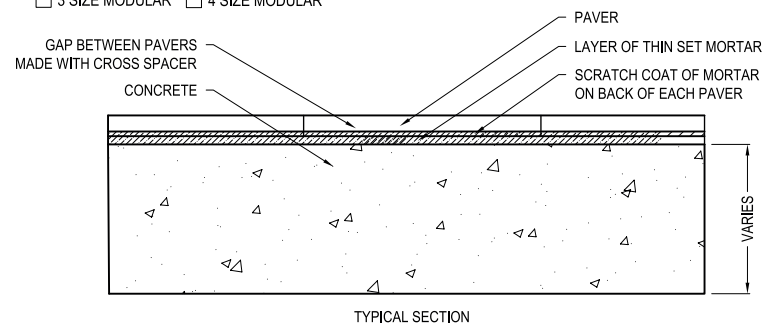


☒ SELECT DESIRED STONE SIZE (3/4" THICK):

☐ 8" X 48" ☐ 16" X 48" ☐ 24" X 36" ☐ 24" X 48" ☐ 40" X 40" ☐ 48" X 48"  
☐ 20" X 40" ☐ 24" X 24" ☐ 24" X 72" ☐ 32" X 32" ☐ 16" X 32" \* ONLY AVAILABLE IN 1 1/4" THICK

☒ SELECT DESIRED PATTERN:

☐ 3 SIZE MODULAR ☐ 4 SIZE MODULAR



## DO NOT MISS YOUR CHANCE TO GET SPECIFIED

CADdetails empowers you with high-quality files presented in an elegant design library. We let you save time and stop losing sales. We let you save time and stop losing sales. Don't be edged out of construction projects because you do not have the right design files in front of the right professionals at the right time. Book a call with us today.

### SPECIFICATIONS :

MATERIAL : PORCELAIN

STONE SIZE : 13"X24"X3/4" (ONE LONG SIDE BULLNOSE AND THE OTHER EASE EDGE)

SURFACE : ANTI-SLIP (R11)

### NOTES :

- DO NOT SCALE DRAWING.
- THIS DRAWING IS INTENDED FOR USE BY ARCHITECTS, ENGINEERS CONTRACTORS, CONSULTANTS AND DESIGN PROFESSIONALS FOR PLANNING PURPOSES ONLY. THIS DRAWING MAY NOT BE USED FOR CONSTRUCTION
- CONTRACTOR'S NOTE: FOR PRODUCT AND COMPANY INFORMATION VISIT: [www.CADdetails.com/info](http://www.CADdetails.com/info) AND ENTER REFERENCE NUMBER 0000-006

### MANUFACTURER'S NOTES :

- PLEASE SEE MANUFACTURER'S WEBSITE FOR FULL SELECTION OF PORCELAIN PAVER COLOR OPTIONS

• 1 SET OF "3 SIZE MODULAR PATTERN" INCLUDES:

12"X24"X3/4" - 24"X24"X3/4" - 24"X36"X3/4"

• 1 SET OF "4 SIZE MODULAR PATTERN" INCLUDES:

12"X24"X3/4" - 18"X18"X3/4" - 18"X36"X3/4" - 24"X24"X3/4"

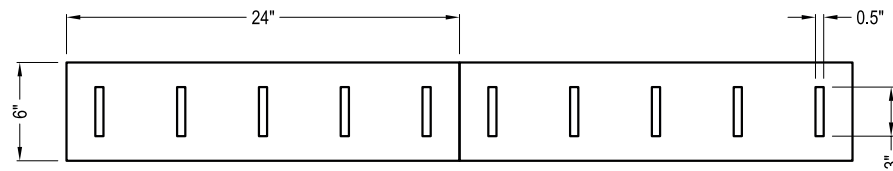
### NOTES :

- DO NOT SCALE DRAWING.
- THIS DRAWING IS INTENDED FOR USE BY ARCHITECTS, ENGINEERS CONTRACTORS, CONSULTANTS AND DESIGN PROFESSIONALS FOR PLANNING PURPOSES ONLY. THIS DRAWING MAY NOT BE USED FOR CONSTRUCTION
- CONTRACTOR'S NOTE: FOR PRODUCT AND COMPANY INFORMATION VISIT: [www.CADdetails.com/info](http://www.CADdetails.com/info) AND ENTER REFERENCE NUMBER 0000-002

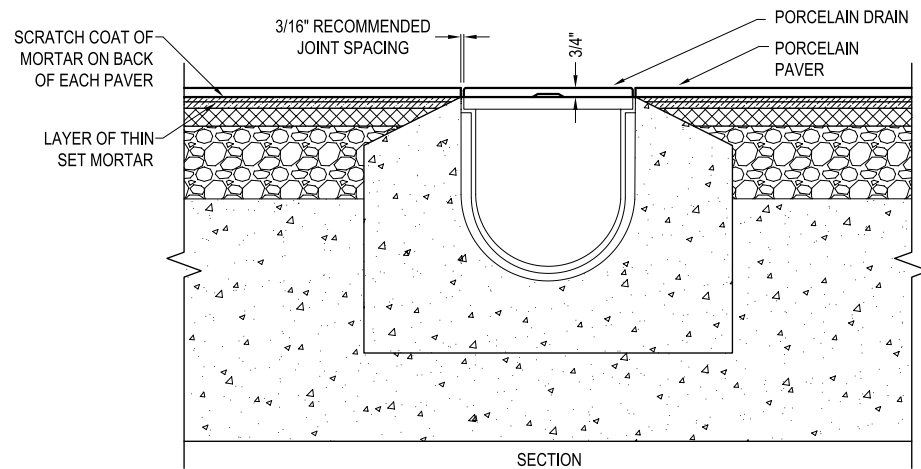


☒ SELECT DESIRED DRILL HOLE OPTION:

☐ STANDARD (SHOWN) ☐ CUSTOM ORDER: \_\_\_\_\_



PLAN VIEW  
DRAIN WITH STANDARD DRILL HOLES



SECTION

## MANUFACTURER'S NOTES :

• ALL SIZES LISTED ARE NOMINAL.

## NOTES :

- DO NOT SCALE DRAWING.
- THIS DRAWING IS INTENDED FOR USE BY ARCHITECTS, ENGINEERS CONTRACTORS, CONSULTANTS AND DESIGN PROFESSIONALS FOR PLANNING PURPOSES ONLY. THIS DRAWING MAY NOT BE USED FOR CONSTRUCTION
- CONTRACTOR'S NOTE: FOR PRODUCT AND COMPANY INFORMATION VISIT: [www.CADdetails.com/info](http://www.CADdetails.com/info) AND ENTER REFERENCE NUMBER 5549-011

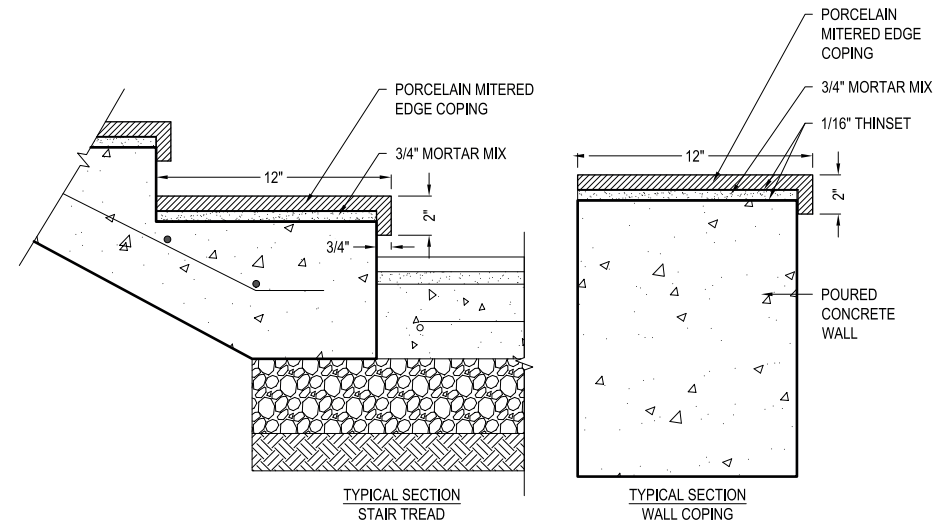


SCAN  
TO WATCH



☒ SELECT DESIRED COLOR:

☐ DARK GREY ☐ LIGHT GREY ☐ CUSTOM FABRICATION



## SPECIFICATIONS :

MATERIAL : PORCELAIN

STONE SIZE : (MITERED EDGE) : 12"X72"X3/4" (WITH 2" DROP)

SURFACE : ANTI-SLIP (R11)

MANUFACTURER'S NOTES:

• ALL SIZES LISTED ARE NOMINAL.

## NOTES :

- DO NOT SCALE DRAWING.
- THIS DRAWING IS INTENDED FOR USE BY ARCHITECTS, ENGINEERS CONTRACTORS, CONSULTANTS AND DESIGN PROFESSIONALS FOR PLANNING PURPOSES ONLY. THIS DRAWING MAY NOT BE USED FOR CONSTRUCTION
- CONTRACTOR'S NOTE: FOR PRODUCT AND COMPANY INFORMATION VISIT: [www.CADdetails.com/info](http://www.CADdetails.com/info) AND ENTER REFERENCE NUMBER 5549-001



# MOBILE SHOWROOM & FEATURED IN MAGAZINES

**Morris Essex**  
HEALTHY & LUXE

**HC&G**  
Hamptons Cottages and Gardens

**NYC&G**  
New York Cottages and Gardens

**C&G**

THE HAMPTONS  
**DESIGN  
GUIDE** 2024



BOOK OUR  
SHOWROOM  
ON WHEELS

## We bring the showroom to you.



# GET OUR DISPLAYS



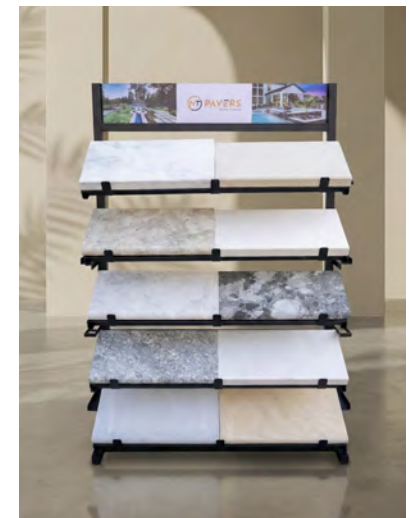
PAVER DISPLAY



8X8 SAMPLE DISPLAY



LARGE TOWER DISPLAY



LARGE COPING DISPLAY



TOWER DISPLAY  
INSTALLATION VIDEO



COPING DISPLAY  
INSTALLATION VIDEO



# USE MANUAL: INSTALLATION MAINTENANCE AND CLEANING

## INSTALLATION

Installation of the material. Before installation it is important to carefully check the hue, size and choice of material, because claims are not accepted against installed materials whose defects were visible before laying. It is recommended that materials are ordered with an excess of 10 to 15% relative to the surface to be tiled, in order to effect repairs or to perfectly match the hue of one tile to the one laid previously.

During installation we advise you to draw the material from several boxes, especially if it comes from a range with a degree of colour shading and chromatic variation higher than V = 2 (refer to the General and collection catalogues). For veined products, such natural stones, it is recommended to arrange the grain of the slabs so as to obtain the best aesthetic and chromatic effect.

The installation can be effected either using cement dust or glue, with the use of specific high-performance adhesives for porcelain stoneware. It is advisable to use glue as it offers more guaranteed grip, especially with large formats. At the time of application, the substrate must be flat, stable, dry and mature, not frozen and not excessively hot, and it is necessary to follow the instructions of the manufacturers of materials for substrates and the specific adhesives used. Cementitious adhesives must be applied at room temperature, and generally between + 5 ° C and + 30/35 ° C. It is understood that also for installation it is recommended to follow the technical times indicated by the manufacturers of the adhesives used. The most suitable adhesives for laying of porcelain tiles can be identified based on the European Standard EN 12004 currently in force. Especially for lapped / polished products (but ideally for all other products), do not mark the material on its usable surface during installation with pencils (graphite) or permanent markers.

The use of double spreading is recommended for tiles with a side longer than 60cm in order to have a compact layer of adhesive as required by installation regulation UNI 11493.

## JOINTS AND GROUTING

The joint width can vary according to the size of the tiles and the desired use of the flooring. The use of a single joint is not recommended; installation is recommended with a joint of at least 2mm for for rectified products and 3 mm for unrectified materials or for materials for outdoor installation (this type of installation enables greater grip of the grout on the sides of the tiles, a greater absorption and compensation for any possible movements of the substrate). The regular use expansion joints is advised in large environments: instead it is sufficient to leave a slight gap between the material and the perimeter walls in the smallest environments. Skirtings will then cover the gap, giving a finished appearance. Always refer to the advice / suggestions of the designer or site manager.

In the case of "running bond" installation of the products in rectangular formats, we recommend staggering the longest side by a maximum of 10-15cm along the length of the adjacent piece. For large formats (as also provided for by UNI 11493) we advise use of the double spreading technique: the glue must be applied to both the back of the tile and on the wall / floor, thus ensuring the absence of gaps between ceramic and support. During the installation of the products it is appropriate to cover the floor with sheets fabric or paper/cardboard, in order to prevent any residual materials scratching the surface of the paving.

For greater aesthetic value, we suggest using a grout in a colour that complements the tiles so as to reduce contrast, especially for lapped and rectified products. After grouting the porcelain tiles it is important, while it is still fresh, to remove any excess grout immediately with a sponge and plenty of water.

## INSTALLATION ON EXISTING FLOORS

1. Before installation, check the evenness of the surface and level if necessary. In all cases, prepare the perfect surface by cleaning to remove all traces of waxes, oils or residues that could compromise adhesion.
2. Use joints of 2 mm and perimeter expansion joints. Respect all expansion joints underneath.
3. Spread the adhesive on the floor with a suitable spatula; also spread the adhesive on the slab to be installed using the flat side of the trowel, in accordance with to "double spreading" method.
4. It can be useful, in certain cases, to load edges and corners with an additional thickness of adhesive.
5. Apply the slab and remove air gaps by carefully beating the surface to promote full adhesion taking care to keep the joints free from adhesive.

## INSTALLATION OF WALL COVERINGS

These require the same operations as any other porcelain stoneware tile:

1. Ensure evenness of the surfaces, levelling them if necessary.
  2. Use joints of at least 2 mm, respecting the use of expansion joints as below.
  3. Spread the adhesive on the wall using a suitable spatula.
  4. Apply the slab and remove air gaps by carefully beating the surface to facilitate full adhesion.
- Use the most suitable porcelain tile adhesive for the type of wall being covered. Outdoors, provide for proper sizing of the joints and an appropriate pattern of elastic joints as a function of the substrate, the size and layout of the facade.

## OUTDOOR INSTALLATION OF PORCELAIN STONEWARE TILES

For successful ceramic paving of exterior surfaces it is essential to select and use high quality tiles, but equally important is the presence of an experienced designer who can adapt, as a whole, the installation system to the specific loads required and the static situation of the surface upon which to intervene. In particular, the foundation layers must be adequate for such loads taking into consideration the possible need to use welded mesh in order to prevent possible settling of the underlying layers. The use of expansion joints, the techniques of application of the setting bed and the tiles must be carried out in accordance with the TECHNICAL REPORT CEN / TR 13548 "General requirements for the design and execution of ceramic tiling." Here follow some guidelines for the installation of Monocibec outdoor flooring:

- 1) Use of enhanced deformable cementitious adhesive, with extended open time (class C2E S1 according to EN 12004) for sizes up to 25cm x 25cm on cement screeds, structures in cast concrete and for waterproofing.
- 2) Use of enhanced deformable cementitious adhesive, with extended open time (class C2E S2 according to EN 12004) for larger tiles on cement screeds, structures in cast concrete and for waterproofing.
- 3) Apply the "double spreading" technique by means of a toothed spatula so as to have a full bed: this prevents the formation of voids that could provoke the stagnation of water with the accompanying risk of an increase in volume due to frost and the consequent detachment or breakage of the flooring.
- 4) Use of joints of not less than 3 mm and the application of expansion joints (width not less than 5 mm and utilized at least every 9-12 m<sup>2</sup>) to meet the address strong stresses due to diurnal / seasonal temperature changes to create support for the porcelain stoneware which has virtually zero coefficient of expansion.
- 5) The project gradients must be regular and at least 1.5% in order to allow an easy run-off of liquids. This must be created within the structure or by preparing a special sloping screed; varying the thickness of the setting bed to create a slope, as in the case of traditional cement laying, is not recommended.

## CLEANING AFTER INSTALLATION

Cleaning is required following installation. Inadequate or late removal of the grouting used on the joints may leave hard-to-remove marks and create a cement film on the flooring capable of absorbing all types of dirt, thus giving the impression that the material itself is dirty.

a) Joints with grouting cement (class CG - EN 13888): to remove the excess grout cement, wash the floor with a solution of water + buffered acid (percentages of water / acid as shown on the packaging).

We recommend using the following products:

- Deterdek - Fila
- Delta Plus - Kerakoll
- Keranet - Mapei
- Cement Remover - Faber
- Solvacid - Geal Bel Chimica

b) Grout joints with epoxy filler (Class RG - EN13888) (not recommended for textured or lapped / polished surfaces until after testing in situ): It is critical not to leave epoxy residues - remove all excess material from the surface of the tile before it begins to harden, as subsequent removal could be very difficult. If residues and rings of epoxy grout are present, use a specific product and follow the instructions from the manufacturer:

We recommend using the following products:

- Fuga-Soap Eco (Kerakoll)
- Epoxy Residue Remover (Faber Chimica)
- CR10 (FILA)
- Eposolv (Geal Bel Chimica)

For both types of grout we recommend in the first phase the collection of coarse dirt and rubbing the detergent (diluted according to the manufacturer's instructions) onto the tiling using a colourless cloth. We suggest performing a preliminary wash on a surface sample of a few square metres; in the case of a positive result, extend cleaning to the entire surface, and prevent the above detergents coming into contact with special or decorated pieces and elements of aluminium, steel, natural stone (e.g. marble). During the detergent's action time (set by the manufacturer on the label) scrub the dirt and grime with Scotch-Brite pads or a cellulose sponge. Subsequently, rinse the flooring with water to ensure that it is free of detergent and dirt residues. For polished/lapped materials and special or decorated pieces, be sure to proceed with the cleaning of excess grout and cement mortar before they dry out, in order to avoid the subsequent use of abrasive sponges on shiny surfaces which could lead to scratching.

After the acid wash it may be necessary to perform a basic or alkaline wash using degreasing detergents. This is because the acid wash can leave an oiliness on the flooring that could attract dirt. For alkaline detergents we recommend the use of the following products:

- Fila PS / 87 - Fila
- Wax remover - Faber Chimica
- Deterflash - Geal Bel Chimica

## ROUTINE MAINTENANCE AND DAILY CLEANING

After "after installation" cleaning (previous chapter), for good maintenance of Monocibec ceramic surfaces clean with common neutral detergent diluted in hot water is sufficient, always following the manner specified on the packaging. Please pay close attention to the phases of rinsing and drying of the flooring, allowing you to remove dirt and avoid accumulation (stratification) of limescale, detergent and dirt residues. The products that we recommend for this purpose are the following:

- Fila Cleaner - Fila
- Tile Cleaner - Faber Chimica
- Bel Gres - Geal Bel Chimica

We strongly advise against the use of waxes, oily soaps, impregnating agents and hydro-oil repellent treatments on the porcelain stoneware product where their application is not necessary. Hydrofluoric acid (HF) and its derivatives irreparably damaging all ceramic products, so it is always important to make sure not to use products containing these chemicals (sometimes present in some items for the special cleaning of bathrooms, showers surfaces, etc.)

## SPECIAL CLEANING

In the case of particular and / or particularly stubborn stains, or for special cleaning of the entire floor, it is advisable to use specific detergents as indicated in the table below. It should also be emphasized that the removal of any type of stain is easier if it is removed while still fresh. In particular, with lapped or polished porcelain tiles it is important to perform a preventive test before using detergent products.

Fincibec is a member of



# PULIZIA STRAORDINARIA / EXTRAORDINARY CLEANING / NETTOYAGE EXTRAORDINAIRE / AUSSERORDENTLICHE REINIGUNG / LIMPIEZA EXTRAORDINARIA

Tipo di macchia Type of stain Type de tache Art des Flecks Tipo de mancha	Detergenti * / Detergents / Détergents / Reinigungsmittel / Detergentes		Solventi * Solvents Solvants Lösungsmittel Disolvente
	Sgrassatori / pulitori alcalini Degreasers / Cleaners alkaline Dégraissants / Nettoyants alcalins Fettlösende Mittel / Alkalische Reiniger Desengrasantes / Limpiadores alcalinos	Decalcarizzanti acidi Limescale removers acid Détartrants acides Kalklösend Säuren Descalcificadores ácidos	
Olio e grasso / Oil / Huile / Öle / Aceite Grasso / Grease / Graisse / Fett / Grasa Birra / Beer / Bière / Bier / Cerveza Aceto / Vinegar / Vinaigre / Essig / Vinagre Succo di frutta / Fruit juice / Jus de fruit / Obstsaft / Zumo de fruta Salse / Sauces / Saucen / Soßen / Salas Macchie di verdura / Vegetable stains / Tache de légumes / Gemüseflecke / Manchas de verduras Thè / Tea / Thé / Tee / Te Residui organici / Organic residues / Résidus organiques / Organische Reste / Resíduos orgánicos Gomma di scarpe / Shoe rubber / Caoutchouc de chaussures / Gummisohlen / Goma de zapatos Cera di trattamento / Treatment wax / Cires de traitement / Pflegemittel auf Wachsbasis / Cera de tratamiento	FILA PS/87 (FILA) WAX REMOVER (FABER CHIMICA) DETERFLASH (GEAL - Bel. CHIMICA)		
Ketchup	FILA PS/87 (FILA) DETERFLASH (GEAL - Bel. CHIMICA)	FLOOR CLEANER (FABER CHIMICA)	
Gelato / Ice cream / Glace / Eis / Helado	FILA PS/87 (FILA) WAX REMOVER (FABER CHIMICA) DETERFLASH (GEAL - Bel. CHIMICA)	FLOOR CLEANER (FABER CHIMICA)	
Caffè / Coffee / Café / Kaffee / Café	FILA PS/87 - FILA SR/95 (FILA) COLOURED STAIN REMOVER (FABER CHIMICA) DETERFLASH (GEAL - Bel. CHIMICA)	SOLVACID (GEAL - Bel. CHIMICA)	
Vino / Wine / Vin / Wein / Vino Coca cola / Coke / Coca-Cola / Cola / Coca-cola	FILA PS/87 - FILA SR/95 (FILA) COLOURED STAIN REMOVER (FABER CHIMICA) DETERFLASH (GEAL - Bel. CHIMICA)		
Chewing gum / Chewing gum / Chewing gum Kaugummi / Chicle	FILA PS/87 (FILA) WAX REMOVER (FABER CHIMICA) DETERFLASH (GEAL - Bel. CHIMICA)		SOLVENT STRIPPER (FABER CHIMICA)
Nicotina / Nicotine / Nicotine / Nikotin / Nicotina Urina-vomito / Urine-vomit / Urine-vomissure Urin-Erbrochenes / Orina-vómito	FILA PS/87 - FILA SR/95 (FILA) COLOURED STAIN REMOVER (FABER CHIMICA) DETERFLASH (GEAL - Bel. CHIMICA)	FLOOR CLEANER (FABER CHIMICA) SOLVACID (GEAL - Bel. CHIMICA)	
Pneumatico / Pneumatic / Pneumatique Reifen / Neumático	FILA PS/87 (FILA) WAX REMOVER (FABER CHIMICA) DETERFLASH (GEAL - Bel. CHIMICA)	FLOOR CLEANER (FABER CHIMICA)	
Tintura per capelli / Hair dye / Coloration pour cheveux / Haarfarbemittel / Tinte para el cabello	FILA PS/87 - FILA SR/95 (FILA) COLOURED STAIN REMOVER (FABER CHIMICA) DETERFLASH (GEAL - Bel. CHIMICA)	FLOOR CLEANER (FABER CHIMICA)	
Vernice / Paint / Peinture / Lack / Barniz Resine / Resins / Résines / Harz / Resinas Smalti / Enamels / Vernis / Nagellack / Esmaltes Pittura al quarzo / Quartz paints / Peintures au quartz / Quarzfarben / Pinturas al cuarzo Temperе contententi resine / Watercolours containing resins / Gouaches contenant des résines / Temperafarben mit Harzen / Témperas con resinas	FILA PS/87 - FILA NO PAINT STAR (FILA) WAX REMOVER (FABER CHIMICA)	FLOOR CLEANER (FABER CHIMICA) SOLVACID (GEAL - Bel. CHIMICA)	
Colla / Glue / Colla / Klebstoff / Pegamento	FILA PS/87 - FILA NO PAINT STAR (FILA) WAX REMOVER (FABER CHIMICA)	SOLVACID (GEAL - Bel. CHIMICA)	
Residui stucco CG (cemento con polimeri) / Cement residues CG (with polymers) / Résidus de mortier CG (à base de ciment avec polymères) / Stuckreste CG (Zement mit Polymeren) / Resíduos de masilla CG (de cemento con polímeros)		SOLVACID (GEAL - Bel. CHIMICA) CEMENT REMOVER (FABER CHIMICA) DETERTEK (FILA)	
Residui stucco RG (epossidico) / Cement residues RG (epoxy) / Résidus de mortier RG (époxy) / Stuckreste RG (Epoxid) / Resíduos de masilla RG (epoxidico)	CR10 (FILA) EPOXY RESIDUE REMOVER (FABER CHIMICA)	EPOSOLV (GEAL - Bel. CHIMICA)	
Inchiostro / Ink / Encre / Tinte / Tinta Pennarello / Felt-tip pen / Feutre / Filzstift / Rotulador	FILA PS/87 - FILA SR/95 (FILA) COLOURED STAIN REMOVER (FABER CHIMICA)	SOLVACID (GEAL - Bel. CHIMICA)	
Graffiti / Graffiti / Graffiti / Graffiti / Pintadas	FILA NO PAINT (FILA) COLOURED STAIN REMOVER (FABER CHIMICA)	SOLVACID (GEAL - Bel. CHIMICA)	GRAFFITI REMOVER ECO (FABER CHIMICA)
Residui di nastro adesivo / Tape residue Résidus de ruban adhésif / Rückstände von Klebestreifen Resíduos de cinta adhesiva	FILA PS/87 - FILA ZERO SIL (FILA) WAX REMOVER (FABER CHIMICA)	SOLVACID (GEAL - Bel. CHIMICA)	FILASOLV (FILA) SOLVENT STRIPPER (FABER CHIMICA)
Bitume / Bitumen / Bitume / Bitumen / Betün Cera di candela / Candle wax / Cire de bougie Kerzenwachs / Cera de vela	DETERFLASH (GEAL - Bel. CHIMICA) WAX REMOVER (FABER CHIMICA)		FILASOLV (FILA) SOLVENT STRIPPER (FABER CHIMICA)
Cemento-salnitro / Cement-saltpeter / Ciment-salpêtre Zement-Salpeter / Cemento-salitre Calcare / Lime / Calcaire / Kalk / Cal Temperе a base di calce (senza leganti sintetici) / Lime-based watercolours (without synthetic binders) / Peintures à base de chaux (sans liants synthétiques) / Temperafarbe auf Kalkbasis (ohne syntetische Bindemittel) / Pinturas a base de cal (sin ligantes sintéticos)		DETERDEK (FILA) CERAMIK (GEAL - Bel. CHIMICA) CEMENT REMOVER (FABER CHIMICA)	
Ruggine / Rust / Rouille / Rost / Herrumbre Segni metallici / Metallic marks / Signes métalliques Metallspuren / Señales metálicas		DETERDEK - FILA NO RUST (FILA) CERAMIK (GEAL Bel. CHIMICA) FLOOR CLEANER (FABER CHIMICA)	
Ingrigimento generale / General greying / Effet de grisaille ou jaunissement général / Allgemeines Vergrauen / Agrisamiento general Orme e polvere da calpestio / Footprints and Dust from footfall / Empreintes et poussières de piétnement / Spuren und Staub durch Auftreten / Huellas y polvo de pisada		DETERDEK (FILA) SOLVACID (GEAL - Bel. CHIMICA) FLOOR CLEANER (FABER CHIMICA)	
Fuga sporca / Dirt joint / Fuite polluante Schmutzige Fuge / Junta sucia	FUGANET (FILA) FUGAPULITA (GEAL)	FLOOR CLEANER (FABER CHIMICA)	



# OUTDOOR PORCELAIN PAVER CLEANING GUIDE

## AFTER SETTING CLEANING

For the after setting cleaning of a recently installed surface we suggest to use the proper cleaning product according to the type of grout used for the tile joints:

GROUT TYPE	SUGGESTED FABER PRODUCT
Cementitious Grout Residues	CEMENT REMOVER
Epoxy Grout Residues	EPOXY CLEANER

## DAILY CLEANING & PERIODIC MAINTENANCE





Specific products for daily cleaning of porcelain ceramic tiles contribute to the beauty and maintenance over the time. Use these solutions with brush, rag or mop. No rinse required.

Daily Cleaning	FLOOR CLEANER
Periodic Maintenance	TILE CLEANER diluted 1:9

## EXTRAORDINARY CLEANING AND STAIN REMOVAL

To remove dirt or particular stains from the surface, we suggest the use of a specific detergent if the dirt spreads over the entire surface, while to remove a specific stain or localized residues, proceed with the stain remover.

STAIN / DIRT TYPE	SUGGESTED FABER PRODUCT
Coal	 <b>CEMENT REMOVER</b>
Concrete	
Carbonate Efflorescence	
Cement Mortar	
Rust	
Colored Grout	
Wall Paint	

STAIN / SIRT TYPE	SUGGESTED FABER PRODUCT
Plaster	 <b>TILE CLEANER</b>
Superficial Patina And Detergent Residues	
Marks And Metallic Residues	
Stubborn Dirt	
Footprint And Haloes	
Coffe	 <b>COLOURED STAIN REMOVER</b>
Wine	
Nicotine	
Marker Pen / Permanent Inks	
Hair Dye	
Ice Cream	
Linseed Oil	 <b>DEEP DEGREASER</b>
Animalal or Vegetable Grease	
Mustard / Mayonese / Ketchup	
Silicone / Metallic Oils	
Tyre Marks	
Rubber Mark	
Candle Wax	
Protective Wax	
Bituminous Residues	
Resin	 <b>EPOXY CLEANER</b>
Glazes	
Grafitti	
Permanent Inks	
Mastics	
Syntetic Grouts	
Silicon	



TO DATE, THERE ARE NO STANDARDS RELATING TO RAISED OUTDOOR FLOORING THE ONLY STANDARD THAT CAN ACT AS A REFERENCE IS UNI EN 12825, WHICH SPECIFIES THE FEATURES AND PERFORMANCE REQUIREMENTS OF RAISED FLOORINGS MAINLY INTENDED TO USED INSIDE BUILDINGS. PORCELAIN 2 CM PAVER MEETS THE REQUIREMENTS OF THIS STANDARD ( LISTED IN THE FOLLOWING TABLE ) WITH REGARD TO THE "DYNAMIC LOAD - SHOCK PROOF TEST AGAINST HARD BODIES WE RECOMMEND CHOOSING THE MATERIAL ACCORDING TO THE INTENDED USE AND USING STRUCTURES THAT ARE MAXIMUM 100 MM HIGH.

## FINE PORCELAIN STONEWARE

	TECHNICAL FEATURES	REFERENCE STANDARD OR TESTING METHOD	VALUE REQUIRED ACCORDING TO STANDARDS	ASSESSED VALUE
Dimensions And Quality Of The Surface	Length and width (acceptable deviation (%) of the average size of each tile from the manufactured W size).	UNI EN ISO 10545-2	± 0,6 % (± 2,0 mm)	Compliant
	Thickness		± 5 % (± 0,5 mm)	
	Straightness of the edges		± 0,5 % (± 1,5 mm)	Compliant
	Orthogonality		± 0,5 % (± 2,0 mm)	Compliant
	Planarity		± 0,5 % (± 2,0 mm)	
	Surface quality		Minimum 95% of the tested tiles must be free from visible defects	Compliant
Physical Properties	Mass of Water absorbed	UNI EN ISO 10545-3	Eb ≤ 0,5 %	≤ 0,1 %
	Breaking strength (S) - Flexural resistance (R)	UNI EN ISO 10545-4	S > 1300 N R > 35 N/mm <sup>2</sup>	> 10000 N > 45 N/mm <sup>2</sup>
	Resistance to Frost	UNI EN ISO 10545-12	Request	Compliant
	Deep abrasion resistance	UNI EN ISO 10545-6	≤ 175 mm <sup>3</sup>	Compliant
	Resistance to thermal shocks	UNI EN ISO 10545-9	Available test method	Compliant
	Coefficient of linear thermal dilation	UNI EN ISO 10545-8	Available test method	Compliant
Chemical Properties	Resistance to chemical products	UNI EN ISO 10545-13	They must not show relevant signs of chemical attacks	Compliant
	Stain resistance	UNI EN ISO 10545-14	Minimum Class 3	Compliant
Safety	Coefficient of kinetic friction	ANSI A137.1 - DCOF	Wet > 0.42	> 0.42
	Classification non-slip	B.C.R.A	D.M. <sub>μ</sub> > 0.4	> 0.4
		DIN 51130	Depending on the workplace or work area	R11
		DIN 51097	Depending on the wet areas subject to barefoot traffic	A+B+C

With the exception of special pieces and decors.

**The international reference standards : ISO - EN :** The values of the main technical characteristics measured on our products, compared with international standards are clearly shown and reproduced on our contractual documents ( catalogs, price lists, etc. ). The values given in this document are common to groups of articles or series of our tiles and therefore are to be used as a guide for a first orientation in choosing the product. If required, the specific values for a given product of a determined supply can be provided depending on its intended use, when formally brought to our attention by notice in writing.

Characteristics and Test Methods	Requirements EN 14411 <sup>(1)</sup> - G / ISO 13006 <sup>(2)</sup> - G	Our general values
Determination of Water Absorption (ISO 10545-3)	Average value E <sub>a</sub> ≤ 0,5 % / Individual maximum ≤ 0,6 %	≤ 0,03 % Average value and individual maximum
Classification	Definition § 3.2 and § 3.7	BI <sub>A</sub> - Porcelain Tiles
<b>20 mm Physical properties</b>		<b>Physical Properties</b>
Modulus of Rupture (ISO 10545-4)	Average ± 35 N/mm <sup>2</sup>	≥ 50 N/mm <sup>2</sup>
Breaking Strength - (ISO 10545-4)	Average ± 1300 N for thickness ≥ 7,5 mm Average ± 700 N for thickness ≥ 7,5 mm	Complies
Flexion Resistance and Breaking Load - (EN 1339-F) P- Average Breaking Strength T- Average of Modulus of Rupture	Classes according to EN 1339 - § 5	≥ U11 (For square slabs) ≥ 12.000 N (For square slabs)
Compressive Strength (cubic sample 2 cm side)	NA	≥ 200 N/mm <sup>2</sup>
Mohs hardness Scale (ex EN 101 / BS 6431-13)	NA	≥ 8
Resistance to Surface abrasion - (ISO 10545-7)	Abrasion Class and Cycles Passed	Class 0 - 5
Resistance to Deep abrasion - (ISO 10545-6)	Max Volume Abraded < 175 / mm <sup>3</sup>	< 130 / mm <sup>3</sup>
Raccomanded Use	Novabell Criterion	Class 5 (see Annex N - ISO 13006 / EN 14411)
Color Resistance to UV Light (DIN 5194)	---	Resistant
Coefficient of Linear Thermal Expansion (ISO 10545-8)	Declared Value <sup>(3)</sup> / Test Method Available <sup>(2)</sup>	< 7,1 x 10 <sup>-6</sup> °C <sup>-1</sup>
Thermal Shock Resistance (ISO 10545-9)	Pass According to EN ISO 10545-1 <sup>(1)</sup> / Test Method Available <sup>(2)</sup>	Complies
Crazing Resistance (ISO 10545-11)	Pass According to EN ISO 10545-1 <sup>(1)</sup> / Required <sup>(2)</sup>	Complies
Frost Resistance (ISO 10545-12)	Pass According to EN ISO 10545-1 <sup>(1)</sup> / Required <sup>(2)</sup>	Complies
Moisture Expansion (ISO 10545-10)	Declared Value <sup>(3)</sup> / Test Method Available <sup>(2)</sup>	≤ 0,1 mm / m
Small Colour Differences (ISO 10545-16)	D E <sub>sc,da</sub> < 0,75 a < 1,0 <sup>(1)</sup>	If Afreed
Impact Resistance (ISO 10545-5)	Declared Value <sup>(3)</sup> / Test Method Available <sup>(2)</sup>	COR > 0,75
Reaction to Fire	Class A1 or A1 <sup>(1)</sup>	A1, Classified Without Testing (CWT) - 96/603 EC

20 mm Dimensions and Surface Quality	Dimensions and Surface Quality
Dimensions - (ISO 10545-2)	See ANNEX G
Surface quality - (ISO 10545-2 § 7)	A minimum of 95% of the tiles shall be free from visible defects that would impair the appearance of a major area of tiles

(1) Requirements according to EN 14411 (2) Requirements according to ISO 13006 (3) This classification is not an indication of the intended use of NF 187 for concrete slabs.

Test Methods	Requirements and References	Our General Values
DIN 51130	BGR / ASR From R9 to R13	R11
DIN 51097	GUV-I 8527 A-B-C	A+B+C
BCR - ex BCRA	DM n.236 /1989 m > 0,40	m > 0,4
DCOF Resistance (ANSI A 137.1 Section 9.6 )	≥ 0,42 <sup>(1)</sup>	DCOF ≥ 0,42
BS 7679 Pendulum Tester		Wet ≥ 50 Dry ≥ 55



PORCELAIN PAVERS PACKAGING INFORMATION						
Group Name	Product Name	Product Size	Quantity In Crate/sq ft	Quantity In Crate/pcs	Weight of Crate/lbs	Dimensions of Crate
20x40	Alpine, Dark, Desert, Dust, Moon, Sand, Silver, Smokey, Corten, White, Mineral, Fossil, Mars	20"x40"x3/4"	233,3	42 (1pc in a box)	2,150	L42"xD42"xH26"
24x24	Absolute Black, Absolute White	24"x24"x3/4"	240	60 (2 pcs in a box)	2,310	L48"xD32"xH30"
	Light Grey, Dark Grey, Inox	24"x24"x3/4"	256	64 (2 pcs in a box)	2,300	L45"xD45"xH29"
	Ash, Coal, Metal, Sandstone	24"x24"x3/4"	240	60 (2 pcs in a box)	2,160	L47"xD31"xH29"
	Soft Cream, Pietra Grey, Rustic Grigio, Pocono	24"x24"x3/4"	240	60 (2 pcs in a box)	2,160	L47"xD32"xH30"
	Caramel, Honey, Milk, Storm	24"x24"x3/4"	256	64 (2 pcs in a box)	2,300	L45"xD45"xH29"
	Nest, Burnt, Rocky, Flake	24"x24"x3/4"	240	60 (2 pcs in a box)	2,160	L47"xD31"xH29"
	Philly Grey, Philly White, Philly Beige, Philly Taupe	24"x24"x3/4"	256	64 (2 pcs in a box)	2,300	L48"xD32"xH30"
	Urban White	24"x24"x3/4"	256	64 (2 pcs in a box)	2,300	L45"xD45"xH29"
	Lunar, Iron, Oyster, Graphite, Shark, Smoke	24"x24"x3/4"	256	64 (2 pcs in a box)	2,300	L45"xD45"xH29"
Wood Look	Clay	12"x48"x3/4"	288	72 (2 pcs in a box)	2,430	L48"xD38"xH22"
	Timber	8"x48"x3/4"	214	80 (2 pcs in a box)	1,816	L48"xD32"xH28"
		16"x48"x3/4"	256	48 (2 pcs in a box)	2,200	L51"xD43"xH20"
Cement Look	Crema Elegante	40"x40"x3/4"	267	24 (1pc in a box)	2520	L44"xD44"xH30"
	Oyster, Storm, Caramel, Honey	40"x40"x3/4"	233,3	21 (1pc in a box)	1,991	L48"xD41"xH12"
	Inox	32"x32"x3/4"	284,5	40 (1 pc in a box)	2,433	L47"xD37"xH37"
Mini Modular Pattern 3 Sizes	Ash, Coal, Metal, Sandstone	12"x24"x3/4"	240	120 (3 pcs in a box)	2,160	L47"xD31"xH29"
		18"x36"x3/4"	243	54 (2 pcs in a box)	2,200	L47"xD39"xH23"
		24"x24"x3/4"	240	60 (2 pcs in a box)	2,160	L47"xD31"xH29"
Modular Pattern 3 Sizes	Light Grey, Dark Grey, Caramel, Honey, Milk, Urban White	12"x24"x3/4"	252	14 Sets	2,213	L48"xD38"xH32"
		24"x24"x3/4"				
		24"x36"x3/4"				
	Pocono	12"x24"x3/4"	240	120 (3 pcs in a box)	2,160	L48"xD32"xH30"
		24"x24"x3/4"	240	60 (2 pcs in a box)	2,160	L48"xD32"xH30"
		24"x36"x3/4"	324	54 (2 pcs in a box)	2,916	L48"xD36"xH34"
Large Modular Pattern	Tivoli Cream	18"x36"x3/4"	243	54 (2 pcs in a box)	2,030	L47"xD39"xH23"
		24"x24"x3/4"	256	64 (2 pcs in a box)	2,222	L48"xD32"xH30"
		36"x36"x3/4"	270	30 (1 pc in a box)	2,250	L38"xD38"xH30"
24x36	Light Grey, Dark Grey, Urban White	24"x36"x3/4"	288	48 (1pc in a box)	2,444	L36"xD48"xH22"
24"x48"	Light Grey, Dark Grey, Milk, Honey, Storm, Caramel, Romantic White, Romantic Beige, Urban White, Sahara Vein, Sahara Marfil	24"x48"x3/4"	264	33 (1 pc in a box)	2,304	L48"xD26"xH24"
	Nest, Burnt, Rocky, Flake	24"x48"x3/4"	280	35 (1 pc in a box)	2,520	L49"xD35"xH30"
	Philly Grey, Philly White, Philly Beige, Philly Taupe	24"x48"x3/4"	224	26 (1 pc in a box)	2,155	L48"xD32"xH30"
	Platinum Veincut, Pearl Veincut, Chestnut Veincut	24"x48"x3/4"	240	30 pcs (1 pc in a box)	2,210	L48"xD24"xH30"
	Luce, Aria	24"x48"x3/4"	288	36 (1 pc in a box)	2,450	L51"xD40"xH30"
	Lunar, Iron, Oyster, Graphite	24"x48"x3/4"	264	33 (1 pc in a box)	2,450	L51"xD40"xH30"
	Shark, Smoke, Tan	24"x48"x3/4"	264	33 (1 pc in a box)	2,450	L51"xD40"xH30"
	Rustic Grigio	24"x48"x3/4"	240	30 (1 pc in a box)	2,185	L48"xD36"xH30"
	Bianco Cloud, Fiorito Grey	24"x48"x3/4"	280	35 (1 pc in a box)	2,550	L49"xD37"xH30"
24"x72"	Light Grey, Dark Grey, Lunar, Graphite	24"x72"x3/4"	264	22 (1 pc in a box)	2,400	L72"xD36"xH24"
32"x72"	Platinum Veincut, Pearl Veincut, Chestnut Veincut	32"x72"x3/4"	320	20 pcs (1 pc in a box)	2,960	L77"xD40"xH24"
48"x48"	Khroma Talco, Khroma Avorio, Khroma Fango, Khroma Talco	48"x48"x3/4"	256	16 (1 pc in a box)	2,190	L48"xD48"xH20"
	Aspen White, Volcano Grey, Aspen Grey, Aspen Smoke	48"x48"x3/4"	320	20 (1 pc in a box)	2,600	L48"xD48"xH20"
	Oyster, Lunar, Sand, Iron, Hyper Obsidian	48"x48"x3/4"	256	16 (1 pc in a box)	2,190	L48"xD48"xH20"
	Shark, Smoke, Cloudy, Sand Glow	48"x48"x3/4"	256	16 (1 pc in a box)	2,190	L48"xD48"xH20"
3-D Wood Look Panels	Ecru, Honey, Ecru Black, Honey Black, Walnut Black	24"x48"x11/32"	256	32 (2 pcs in a box)	1,970	L60"xD32"xH30"
Porcelain Ledger	Taupe, Beige, White, Grey, Dark	6"x24"x3/8"	528	528 (11 pcs in a box)	1,958	L47"xD32"xH30"
		Corner 6"x(8"+4")x3/8"	sold by pcs	48 (6 pcs in a box)		
3cm	Bluestone Dark, Bluestone Grey	16"x32"x1 1/4"	192	54 (2 pcs in a box)	2,656	L50"xD32"xH22"
	Serica Bone	16"x32"x1 1/4"	192	54 (2 pcs in a box)	2,558	L48"xD32"xH32"
	Strata Grafite, Strata Sabbia, Stratta Genere	24"x24"x1 1/4"	160	40 (1 pc in a box)	2,260	L48"xD32"xH32"
5cm	Basalto, Scarlet Rock, Misty Blue, Golden Buff, Stormy Ash	4"x4"x2"	107	960 pcs/pallet	2,500	L49"xD33"xH26"
		4"x8"x2"	107	480 pcs/pallet	2,500	L49"xD33"xH26"
		8"x8"x2"	107	240 pcs/pallet	2,500	L49"xD33"xH26"
		8"x16"x2"	107	120 pcs/pallet	2,500	L49"xD33"xH26"
		16"x24"x2"	107	40 pcs/pallet	2,500	L49"xD33"xH26"
		24"x24"x2"	112	28 pcs/pallet	2,600	L49"xD25"xH34"
Coping	Dark/Light Grey (Mitered Edge)	12"x72"x2"	180	30 pcs	1,920	L72"xD36"xH22"
	Milk, Honey, Dark Grey (1 long side bullnose)	12"x24"x3/4"	112	56 pcs (2 pcs in a box)	1,300	L42"xD31"xH25"



